



WL-7201C

# Instructions

## Warning

Dear users:

Thanks for choosing our company's product, in order to fully make use of the products, we sincerely suggest follow:

- ◆◆ Please read the instruction in detail and keep it well for further reading and consulting.
- ◆◆ Please follow the instruction to fit and operate the machine correctly.
- ◆◆ Please do not remove and change any accessories of the machine.
- ◆◆ It forbids others to open and remove the mainframe except the authorized people in the company.
- ◆◆ It forbids others to change and maintain the machine except the professional people.
- ◆◆ Please contact us if there is any trouble during operation.

### Please read the NOTES carefully before use Machine.

1. Please make sure the tank is filled with water before start machine .
2. Please put at least two pieces membranes on treat area before start treatment .
3. Please clear the filter in time .otherwise it will cause residual liquid to be poured into the machine and burned out parts .
4. we recommend each area treat time do not over 30mins. over 30mins ,please do not allow clients stay alone, need to check client situation in time.
5. During treatment ,check skin condition every five minutes.
6. If can not feel cold in one minute , please stop and check the condition of machine.
5. Please change water once a day.
6. Patients using the following medical electrical equipment can not use the equipment.
  - Implanted cardiac pacemakers or other implanted electronic devices;
  - Life-sustaining artificial heart-lung machines and other equipment;
  - Portable ECG measurement equipment;

The following patients should be agreed by the professional doctors before using the equipment.

- Patients with acute
- Malignancy
- Patients with Infectious
- Menstrual period women
- Pregnant women
- Patients with heart
- Patients with fever
- Patients are receiving operation or those with abnormal body phenomenon;

After Sale service

◆ We offer ONE YEAR warranty. Within warranty period, all exchanges or replacement due to defects are free. (Buyer is responsible for shipping charges).

If the machine is over warranty, please also do not hesitate to contact us. we will assure you of our best service all the time.

◆ How to contact us?

Phone:(+86) 189 -487-55929

Tel: 0755-86368500

Email: sales@mychway.com

[www.mychway.com](http://www.mychway.com)

This product does not belong to medical, please don't use for disease treatment!

## Chapter 1: Safety Warnings

### I. Electricity & Machinery Safety

1. The machine is universal general voltage. Can work with 100V & 200V voltage.
2. Please keep the voltage at stable condition.

### II. Contraindication Safety

1. People with heart disease, high blood pressure, or configured cardiac Pacemaker.
2. People with acute inflammation, asthma, deep vein thrombosis, thyroncus, cancer.
3. People with hemorrhagic diseases, trauma or who is bleeding.
4. Pregnant women
5. Medical plastic artificial or metal parts inside the body such as metal teeth or silicone breast implants.
6. People with abnormal immune system.
7. People with numb or insensitive to heat.
8. If you are feeling unwell, Prohibited in the ears, nose, eye throat and do not use this device in advance and tell your doctor.
9. Children under 12 years old are not allowed.

### III. Treatment Safety

1. Treatment Time is less than 30mins/Body Part/Each Treatment.
2. The energy setting is from low to high gradually which should be subject to skin comfortableness for different people.
3. The patient had better wear the protective eye glasses.
4. If you cannot tolerant heat or uncomfortable, please stop the treatment in advance and turn to your doctor for help.

## Chapter 2: General Introduction

### Fat Dissolve Vacuum

Why the Cool Fat Dissolve Vacuum Procedure Is Different?

It is the non-invasive cooling of adipose tissue to induce Fat Dissolve - the breaking down of fat cells - to reduce body fat without damage to other tissues.

It is fundamentally different from other non- or minimally invasive modalities. Other methods of fat removal primarily involve necrotic cell death by damaging fat with heat, high-intensity focused ultrasound, or chemical injections. Each approach poses potential technical challenges,

particularly with respect to targeting the right tissue depth and unintended damage to other structures close to or within the fat layer. Predictability of efficacy using these other techniques is also uncertain. In contrast, the Cool Fat Dissolve operation induces apoptosis only in fat cells to gently and gradually reduce the fat layer while preserving all other tissue.

As triglyceride in fats will be converted into solid in particular low temperatures, it uses advanced cooling technology to selectively target fat bulges and eliminate fat cells through a gradual process that does not harm the surrounding tissues, reduce unwanted fat. When fat cells are exposed to precise cooling, they trigger a process of natural removal that gradually reduces the thickness of the fat layer. And the fat cells in the treated area are gently eliminated through the body's normal metabolism process, to eliminate unwanted fat.

## Technical Specification

Rated input voltage: AC220V-240V 50HZ / AC110V-120V 60Hz

Rated input power: 350VA

Cool cold slimming Vacuum

Power: Up to 200W

Cooling device output temperature: 5~ -10° C

Cooling device output : 0-5Kpa

Cooling liquid: pure water

## Packing Included

Main machine x1 unit

Cool Vacuum head x2

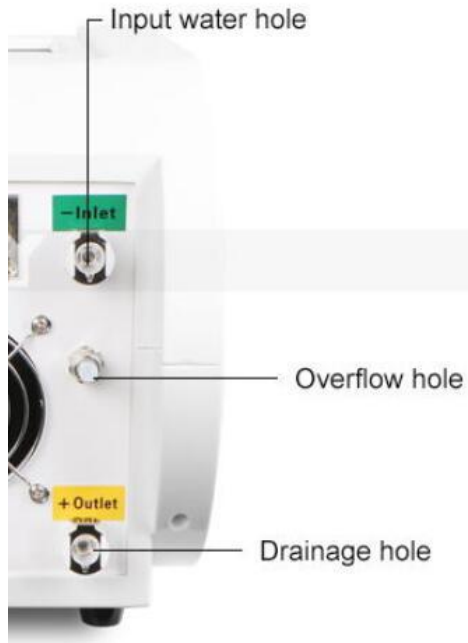
Cooling Membranes x10

Power supply wire x 1

Holder x 2

## Chapter 3: Preparation before use

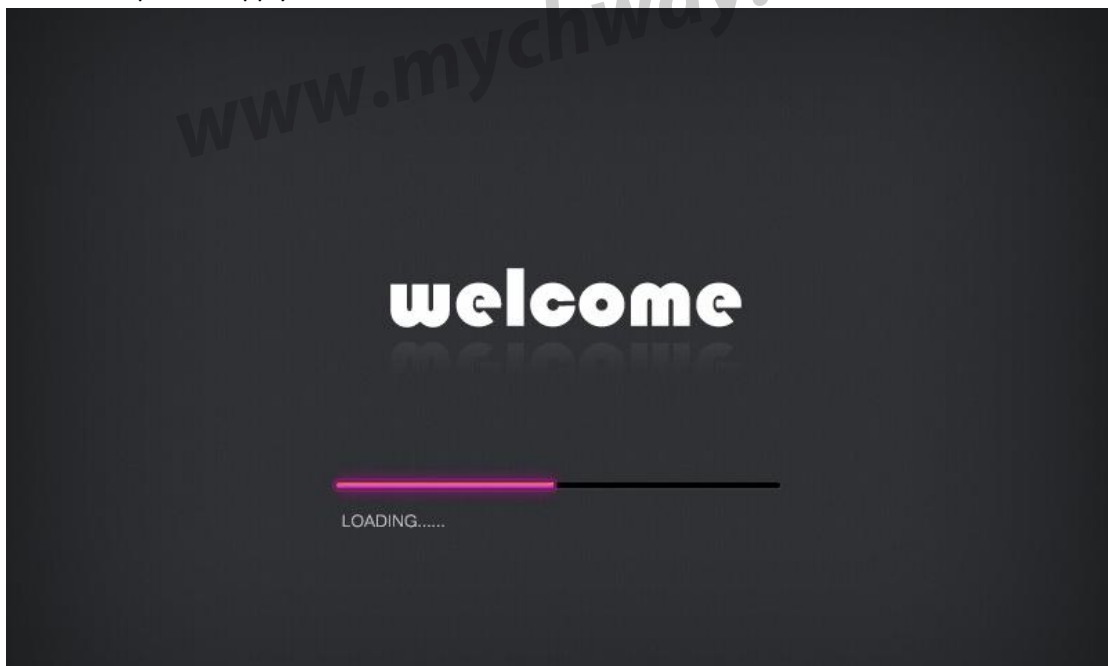
1. Install the attached on-hook on the machine, put the probes into the corresponding racks.
2. Before using the Cryolipolysis Cool-sculpting Slimming Machine, it is required to connect the funnel with inlet hole and open the cap of overflow hole before adding distilled water or purified water.
3. Fill machine with water by funnel through the inlet until water out from the overflow continuously, and then take off the funnel and close cap with the overflow hole.



4. Check the host power cable is connected.
5. Check the key switch of machine is connected.

## Chapter 4: Program setting

- 1 Press the power supply button, the screen will show “Welcome”.



2. Press welcome to enter the main menu.
3. Choose the cryolipolys, and do treatment as below:



Notice:

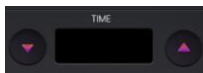


it is the temperature controller. If the temperature is too high, the machine will stop itself and this icon will become gray

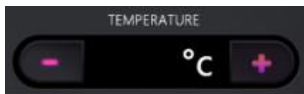




It is the water controller. If the water is not full, or there is something wrong with the water circulation, the machine will stop itself in 5 seconds to protect the machine, and this icon

will become gray



Time setting: set the working time you need;



Temperature setting. Click  and  to adjust the temperature. Please adjust the temperature from high to low, then find the suitable one for you.



1# Probe one;



2# Probe two; You can use the two probes at the same time, and also can use separately.



Start/Pause button;



Back to the main interface;



Clear all the setting.

## Chapter 5: Treatment order

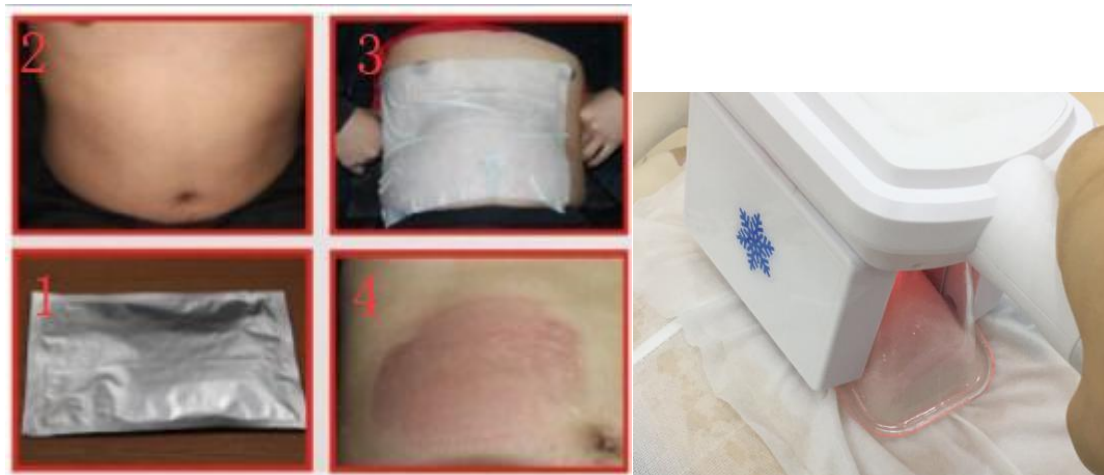
Fat freeze body slimming(abdomen treatment for sample)

- A. Disinfection: please use the cotton with medical alcohol to disinfect the treatment area
- B. Apply 2 pieces of antifreeze membranes on the treatment area
- C. Set the working time and temperature of cooling handle, the temperature range is 15~ -10°C, click to start
- D. Adjust the vacuum pressure.Put the handle on the treatment area and click start button, handle is working.
- E. Turn off vacuum, put the handle on the holder
- F. Take away the antifreeze members
- G. Recommendation

Make sure set the temperature from high to low upon the feeling of customer , -2 to 5 °C recommended

Treatment recommendation: 20-30minutes/session, 1 session/month, 3 session/course of treatment

## Chapter 6: Treatment skills

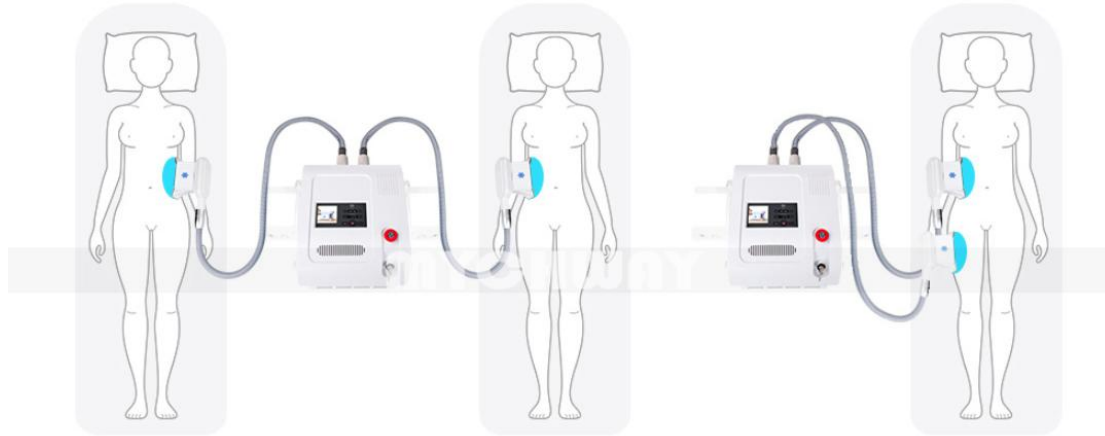


**NOTE:** This is dual cooling head machine, the handles can work individually so you can make this machine work as following:



## DOUBLE HANDLES

You can work alone and can work at the same time .



① Beauty Salon use ,You can treat two customers at the same time ,Not boring during treatment .

② Home use ,You can use two handles in difference areas ,Save time .

### Chapter 7: Attention for cryolipolysis

1. The treatment time at each body site is 20-30 minutes (depending on the thickness of the fat and health status).
2. Eliminate body fat part by part, i.e. it is required to complete a few courses to eliminate the fat of the entire waist.
3. After a treatment about 30 days, take another cryolipolysis treatment at the same location, which can reduce the excess fat thickness. Such a secondary treatment can consolidate the fat dissolving effect, but multiple treatments are not recommended.
4. Cryolipolysis cool-sculpturing treatment is designed for those physically healthy people who have local fat deposits, but not suitable for the one with overall obesity. It can target at the fat at a specific part, such as waist, abdomen, butt, etc. The treatment is not a panacea, it can not treat obesity. It is not a substitute for liposuction or other invasive treatments. Substantial weight loss should be achieved through a balanced diet and regular exercise, cryolipolysis cool-sculpturing treatment can only eliminate the extra fat.
5. Qualified antifreeze fluid or Antifreeze membranes are necessary to avoid frostbite during the treatment process when the temperature is reduced to 0 to -40 degrees. [Consumables, purchased by the user],Please apply at least 2pcs membranes on the treatment area
- 6 Use appropriate and constant suction intensity, the suction intensity is adjustable according to the patient's individual vulnerability. At the same time, the mode of suction and massage can be used.
- 7 After 25-30 minutes of treatment, press the pause button to suspend the suction, check and add antifreeze fluid.
- 8 Considerations after treatment

After the treatment, skin injury, minor frostbite, or pigment may occur, pay attention to take good care of it.

## Chapter 8: Contraindications

1 The patient cannot receive the treatment if he/she has following medical electronic equipment:

- Implanted cardiac pacemakers or other implanted electronic devices;
- Life-support artificial heart-lung machine or other equipment;
- Portable ECG measurement device;

2 The following patients shall have the professional physician's consent before using the machine

- Acute disease patient; - Cancer patient; - Infectious disease patient; - Pregnant women;
- Heart disease patient; - Fever patients;
- Patients receiving another treatment or those with physical anomalies;

3 Careful attention should be paid to following patients when using this machine:

- Infants and young children; - People with sensory or physical impairment;

4. Contraindications

Liver problems; Raynaud's disease; severe cold urticaria; cryoglobulinemia; cold fiber hypoproteinemia; severe frostbite; severe diabetes; as well as the elderly, children, the frail, and the one extremely vulnerable to cold

Product name :		Purchase date:		deadline:	
Seller:		Add.:		Tel.:	+86 18948755929
Customer:		Add.:		Tel.:	
Repair date		Reasonof the fault		Repair content	
Maintain list					