

# User Manual

## SR-NV6133



# Preface

Dear users:

We're pleased to present to you SR-NV6133 *Professional Titanium Mesotherapy Needle Skin Beauty Gun* that features in deep nutrition lead in, anti-aging and skin tightening. It adopts 4MHz thermal dot matrix technology, using 'titanium needle induction' to generate high level energy to boost cell restructuring and accelerate micro circulation. SR-NV6133 *Professional Titanium Mesotherapy Needle Skin Beauty Gun* is for professional use, which needs to be handled by professionals with proper training. Any improper use will result in adverse outcomes. Therefore we advise any personnel read this guide thoroughly and follow the instructions strictly before operation.

We believe our quality product will bring in good returns on your end. Also, you can count on our worry-free after-sales service.

Thank you!

# Table of Contents

Preface
Part I
Brief Introduction
Advantages
Working Principles
Main Effects
Applicable Range
Inapplicable Range
Notes after Operation
Part II
1. Detailed Operations
2. Technical Parameters
3. Safety Precautions
4. Dos and Don'ts
5. Troubleshooting & Solutions
6. FAQs
7. Packing List
8. Operational Diagrams

# Part I

## Brief Introduction

Needle Free Mesotherapy Gun is currently the most popular beauty machine that works on lifting, tightening, deep nourishing, fading dark spots and skin rejuvenation. It addresses skin issues like loose skin, dry skin, malnourished skin, dull skin and so on. Moreover, It's convenient and easy to operate. It solves both skin management issues for beauty-lovers. This equipment requires no injection, no medication, no operation, thus having no side-effects. It generates high level energy through 'titanium needle induction' to boost cell restructuring and accelerate micro circulation thus achieving the efficacy of deep nourishment and skin tightening.

## Advantages

1. Multiple use for both home and spa use.
2. Simple, convenient and fast operation.
3. During the process, it is comfortable, painless, non-invasive, and no downtime.
4. Multi-technology integration provides intimate protection for young skin.
5. Wider range of treatment and rapid and significant effect.
6. Suitable for all skin types and can improve skin quality, deeply hydrate and tighten skin.
7. It will not cause any unevenness, bleeding and swelling or stasis.

## Principles

It adopts the 4 MHz thermal dot matrix technology, using the "titanium needle conduction" to produce high energy to boost cell restructuring, accelerate micro-circulation. "Nano chip" then activates skin cells, instantly opening skin hydrophilic protein channels, pushing nutrient solution to the skin layer, thus promoting effective permeability, improving nutrition absorption, locking nutrition effectively, so as to achieve effects such as delay skin aging, improve skin texture, brighten skin tone, fade spots and skin rejuvenation.

## Main Effects

1. Improve sallow and dull skin.
2. Improve skin dryness, water shortage and lack of nutrition.
3. Improve skin relaxation and sagging.
4. Shrink pores and refine skin.
5. Promote cell recombination, lift and tighten skin.

6. Promote effective penetration, deeply hydrate, moisturize and lock moisture.
7. Improve dry lines, fine lines and dynamic wrinkles.
8. Fade spots, rejuvenate skin, and improve skin quality.

## Applicable Range

1. Those with dry skin, lack of water and nutrition.
2. Those with uneven and dull skin.
3. Those with severe pigmentation at the bottom of the skin and subcutaneous spots.
4. Those with fine lines, dry lines and dynamic wrinkles.
5. Those with skin relaxation and sagging.
6. Those with large pores and coarse skin.
7. Those with gradual loss of facial collagen.
8. Those with slight aging of the skin.

## Inapplicable Range

1. Those whose skin is having an allergic reaction or extremely sensitive.
2. Those in pregnancy, menstruation, or those with heart disease, '3 Hs'(high blood pressure, high cholesterol and high blood sugar).
3. Those who have just undergone plastic surgery and are still recovering.
4. Use with caution for patients with skin diseases and infectious diseases.
5. Those with malignant tumor, hemophilia, or severe bleeding.

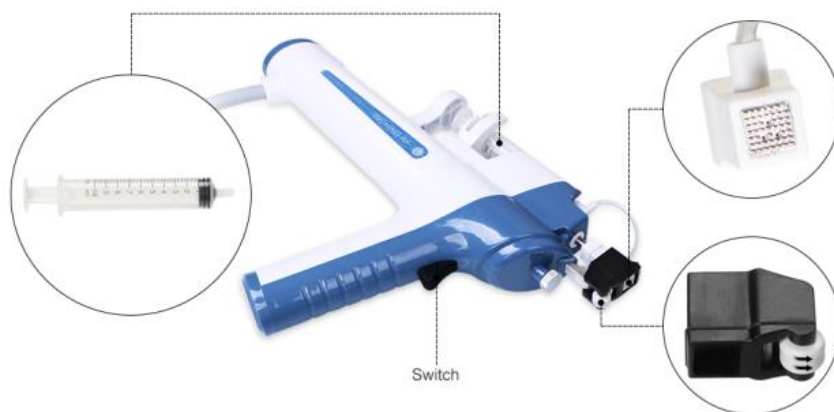
## Notes after Operation

1. Use sun protection and avoid over exposure under the sun.
2. Avoid using hot water to wash face (It is recommended to use warm or cold water instead)
3. Avoiding spicy, greasy food, staying up late, smoking or drinking.
4. Apply at least one hydrating mask every day for one week after operation.

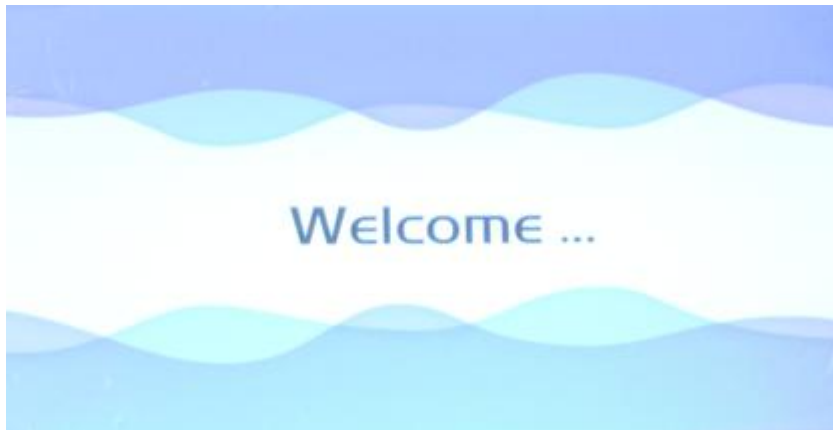
# Part II

## 1. Detailed Operation

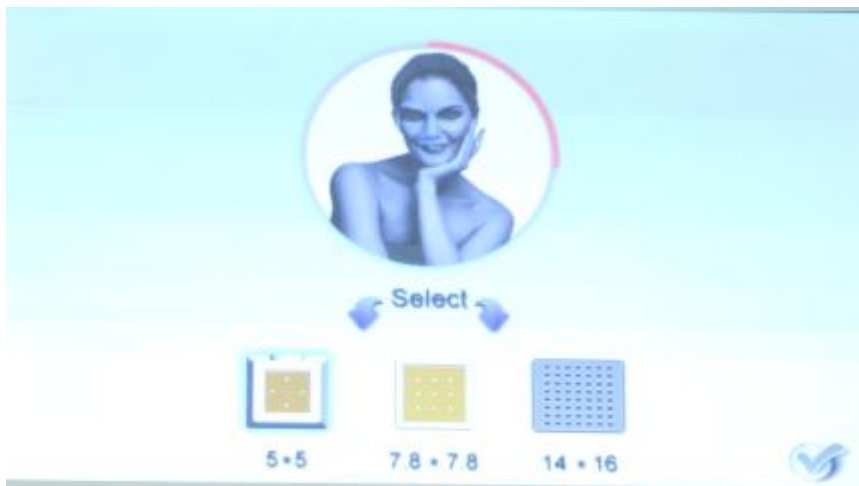
Detailed installation is as follows:



After checking that the instrument is connected properly, the following starting interface will appear when the power supply is turned on.



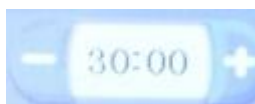
Interface followed after clicking on the screen



### 1.1 Function Selection



Three Probes of different specifications



Working Time



Start/Pause



Injector Thruster - Back



Injector Thruster - Forward



Restore



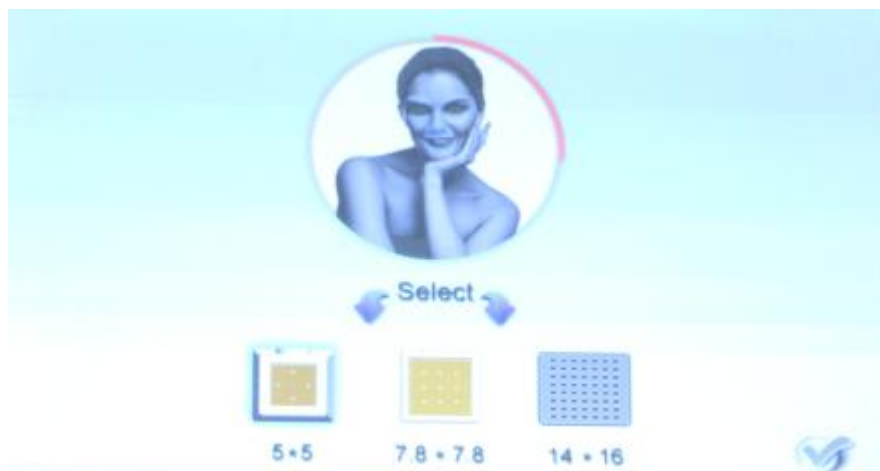
Return

## 1.2 Detailed Operation: 5\*5 Probe (Eye)



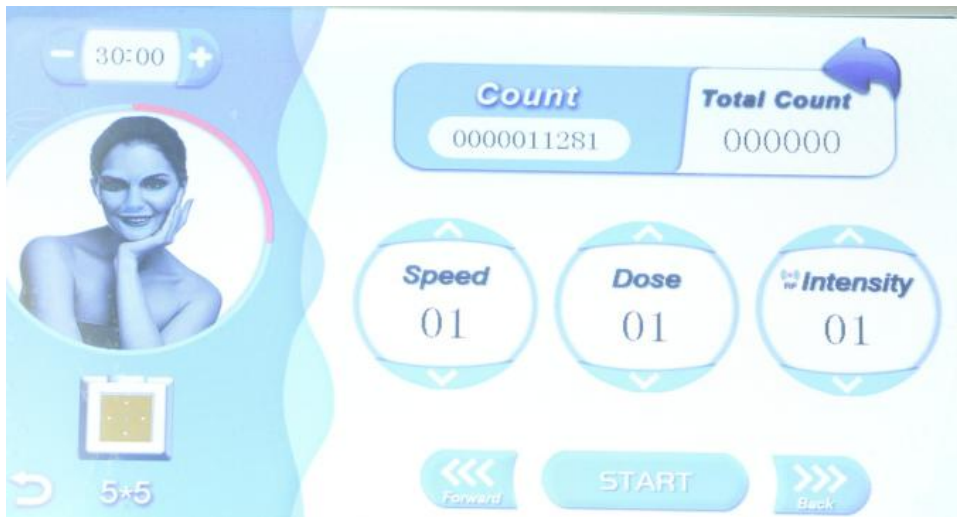
5\*5

Select \_\_\_\_\_ and the following interface appears



Click \_\_\_\_\_ to enter the interface below





Currents Count



Total Count



Restore



Return



Speed (frequency regulation)



Dosage (Smaller number, smaller dosage; Bigger number, bigger dosage.)



Energy Intensity (Adjust subjecting to the customer's comfort level)



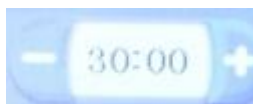
Start/Pause



Injector Thruster - Back



Injector Thruster - Forward



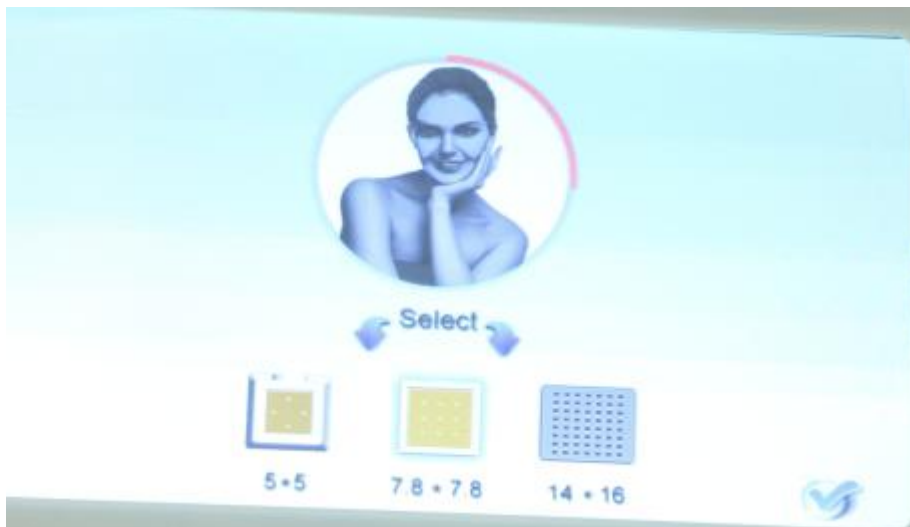
Working Time

### 1.3 Detailed Operation: 7.8\*7.8 Probe (Face)



7.8 \* 7.8

Select and the following interface appears





Click \_\_\_\_\_ to enter the interface below



Currents Count



Total Count



Restore



Return



Speed (frequency regulation)



Dosage (Smaller number, smaller dosage; Bigger number, bigger dosage.)



Energy Intensity (Adjust subjecting to the customer's comfort level)



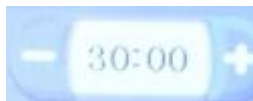
Start/Pause



Injector Thruster - Back



Injector Thruster - Forward

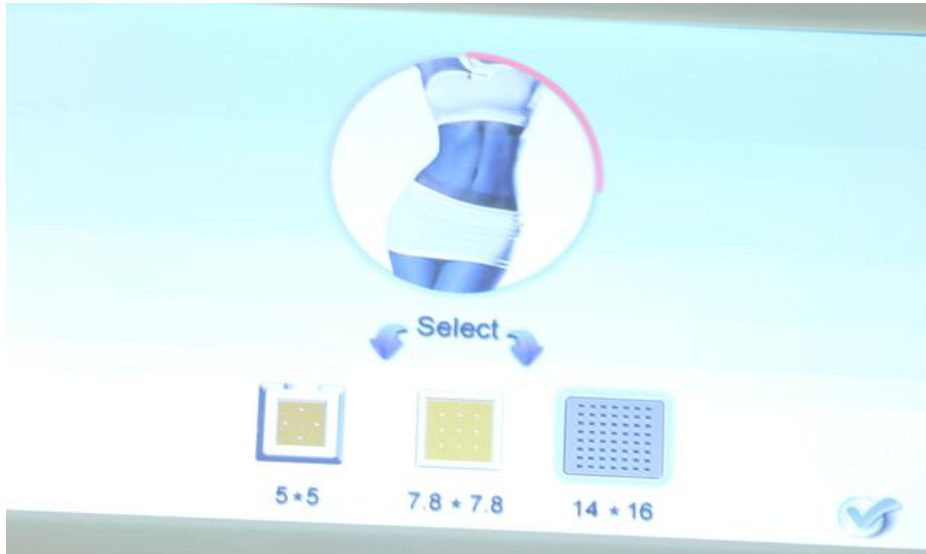


Working Time

## 1.4 Detailed Operation: 14\*16 Probe (Body)



Select **14 \* 16** and the following interface appears



Click  to enter the interface below



Currents Count



Total Count



Restore



Return



Speed (frequency regulation)



Dosage (Smaller number, smaller dosage; Bigger number, bigger dosage.)



Energy Intensity (Adjust subjecting to the customer's comfort level)



Start/Pause



Injector Thruster - Back



Injector Thruster - Forward



Working Time

## 2. Technical Parameters

Power: 36W

Voltage: 110V/240V 50Hz/60Hz Optional

Treatment head: 3 size heads (5\*5, 7.8\*7.8, 14\*16)

### **3.Safety Precautions**

1. Those who area having an allergic reaction or those with severe sensitive skin.
2. Those in pregnancy and lactation or those with heart disease, hyperlipidemia, hypertension, hyperglycemia.
3. Those who have just undergone plastic surgery with unhealed wounds.
4. Use with caution for those with skin disease or infectious disease.
5. Those with malignant tumor, hemophilia or severe bleeding.

### **4.Dos and Dont's**

1. Use a grounding pin and make sure the power socket of the device is properly connected before each operation.
2. Ensure that the voltage of the device is appropriate. If the voltage of the local power supply is unstable, we recommend that users increase to the matching power voltage.
3. In order to ensure the therapeutic effect and normal service life expectancy of the device, please use the specified accessories provided or recommended by the original manufacturer.
4. The device should not be placed in wet environment or near water, nor should they be directly exposed to sunlight.
5. Do not place the device near a strong heat source, because this may affect the life and normal use of the device.
6. Before treatment, please remove all metal objects from the body first, so as to avoid unexpected conditions and influence the curative effect.
7. Please restrain from using the device on eyes, thyroid, parathyroid, testicles, abdomen of pregnant women, and pacemakers.
8. Patients who are suffering from illness should consult with a doctor and gain permission from the doctor before using.
9. Please turn off the power switch of the device, and ensure that the total power supply of the device is turned off before the staff leaves after daily use, so as to ensure the safety of the electrical products.
10. Use device or train device operators in strict accordance with instructions in the user manual.
11. When operating, the instrument should fully touch the skin to avoid uneven heat.
12. Do not stay at one p;ace for over 5 seconds to avoid scald.
13. Start from the lowest energy level and slowly add up.
14. Nano chips used during the process are disposable. Do not reuse it.
15. When using this device, the operating parts must be kept moist and dry skin should be avoided.
16. Clean the instrument with normal saline after operation to ensure its cleanliness

and hygiene and prolong its service life.

## 5. Troubleshooting & Solutions

### 1. The instrument cannot be started, but the key light on the back of the instrument does not work?

- A. Make sure the power cord is connected to a valid power socket.
- B. Whether the fuse tube on the back of the instrument is loose or burnt out.

### 2. No energy output?

- A. Please check whether the plug connecting the instrument handle and the body is tightly connected.
- B. If the above methods cannot be addressed, please contact the instrument dealer for assistance.

## 6.FAQs

### 1.Q: When can I start seeing result of the treatment?

A: Normally that day or within a week. The "titanium needle conduction" produces high energy to boost cell restructuring, accelerate micro-circulation. "Nano chip" then activates skin cells, instantly opening skin hydrophilic protein channels, pushing nutrient solution to the skin layer, thus promoting effective permeability. Therefore more treatments come with better results.

### 2. Q: Can I wear makeup after the treatment?

A: Yes. Your facial skin may appear to be slightly red. After 15-20 min facial mask, it will recede so you don't have to worry about it.

### 3.Q: Does it hurt?

A: The treatment is noninvasive. It uses "titanium needle conduction" to generate high level energy to boost cell restructuring, accelerate micro circulation so as to achieve effects like deep nourishment and skin lifting and tightening. You shouldn't experience any discomfort during the process.




## 7.Packing List

- 1 x Main machine
- 1 x Handle
- 3 x Heads set
- 1 x Power line




1 x Suitcase

## 8.Operational Diagrams

Parameters	Product	Techniques	Diagrams
<b>Facial Skin Rejuvenation : 30 min, once/week</b>			
<p>Speed: 2-8</p> <p>Dosage: 2-5</p> <p>Intensity: 2-8</p>	<p>Makeup remover+ Cleanser+ Disposable Gloves+ steam+ Disposable 5mm syringe+ Hyaluronic acid serum+ Facial mask+ Nano chip+ SR-NV6133</p>	<ol style="list-style-type: none"> <li>1. Remove makeup and clean, 5 min.</li> <li>2. Apply toner, 1 min.</li> <li>3. Put serum into the 5 mm syringe.</li> <li>4. Install nano chip, massage roller, and the syringe with serum in it.</li> <li>5. Put on disposable gloves.</li> <li>6. Adjust energy and frequency.</li> <li>7. Device operation: Move the probe from chin to temple, mouth corner to temple upwards to lift the treatment area, 2 times.</li> <li>8. Move the probe back and forth, tracing nasolabial folds to lift the treatment area, 2 times.</li> <li>9. Lift from lower eyelid to the end of the eyebrow, 2 times.</li> <li>10. Lift towards hairline on forehead, 2 times.</li> <li>11. Do the same on the other side.</li> <li>12. Apply facial mask, 15 min.</li> <li>13. Remove the mask and clean face.</li> <li>14. Apply toner, serum, cream and sunscreen.</li> </ol>	<p>Technique7</p>  <hr/> <p>Technique9</p>  <hr/> <p>Technique10</p> 
<b>Suggested Treatment:</b>			

10 treatments account for one full course. After one treatment, skin is hydrated with less dry lines. After a full course, skin is brightened, canthus is lifted and skin appear to have less fine lines and faded wrinkles around eye. Two courses help with skin rejuvenation, spots fading, less wrinkles, plump, hydrated and elastic facial skin. Three courses help consolidate the effect, remain at the current healthy state and prevent skin aging.

## Neck Skin Rejuvenation : 30 min, once/week

<p>Speed: 2-8</p> <p>Dosage: 2-5</p> <p>Intensity: 2-8</p>	<p>Makeup remover+ Cleanser+ Disposable Gloves+ steam+ Disposable 5mm syringe+ Hyaluronic acid anti-aging serum+ Facial mask+ Nano chip+ SR-NV6133</p>	<ol style="list-style-type: none"> <li>1. Remove makeup and clean, 5 min.</li> <li>2. Apply toner, 1 min.</li> <li>3. Put serum into the 5 mm syringe.</li> <li>4. Install nano chip, massage roller, and the syringe with serum in it.</li> <li>5. Put on disposable gloves.</li> <li>6. Adjust energy and frequency.</li> <li>7. Device operation: Move slowly from collarbone to jawline in lines with one line next to another, covering the whole neck, 2-3 times.</li> <li>8. Apply neck mask, 15-20 min.</li> <li>9. Remove the mask and clean neck.</li> <li>10. Apply toner, serum, neck cream and sunscreen.</li> </ol>	<p>Technique7</p> <div style="text-align: center;">  </div>
------------------------------------------------------------------------	----------------------------------------------------------------------------------------------------------------------------------------------------------------------------------------	-----------------------------------------------------------------------------------------------------------------------------------------------------------------------------------------------------------------------------------------------------------------------------------------------------------------------------------------------------------------------------------------------------------------------------------------------------------------------------------------------------------------------------------------------------------------------------------------------------------------------------------	------------------------------------------------------------------------------------------------------------------------------------------------

**Suggested Treatment:**

10 treatments account for one full course. After one treatment, skin is hydrated and brightened. After a full course, neck skin appears to be even toned and radiant. Two courses help with skin rejuvenation and neck line fading. Three courses help consolidate the effect and prevent skin aging.