



MS-22P1

# Instructions

## **Warning**

Dear users:

Thanks for choosing our company's product, in order to fully make use of the products, we sincerely suggest follow:

- ◆◆ Please read the instruction in detail and keep it well for further reading and consulting.
- ◆◆ Please follow the instruction to fit and operate the machine correctly.
- ◆◆ Please do not remove and change any accessories of the machine.
- ◆◆ It forbids others to open and remove the mainframe except the authorized people in the company.
- ◆◆ It forbids others to change and maintain the machine except the professional people.
- ◆◆ Please contact us if there is any trouble during operation.

After Sale service

◆ We offer ONE YEAR warranty. Within warranty period, all exchanges or replacement due to defects are free. (Buyer is responsible for shipping charges).

If the machine is over warranty, please also do not hesitate to contact us. we will assure you of our best service all the time.

◆ How to contact us?

Phone:(+86) 189 -487-55929

Tel: 0755-86368500

Email: sales@mychway.com

This product does not belong to medical, please don't use for disease treatment!

## **Chapter 1: Safety Warnings**

### **I. Electricity & Machinery Safety**

1. The machine is either 110V And 220V. So whatever the voltage u can use before starting the machine.
2. Please keep the voltage at stable condition.

### **II. Contraindication Safety**

1. People with heart disease, high blood pressure, or configured cardiac Pacemaker.
2. People with acute inflammation, asthma, deep vein thrombosis, thyroncus, cancer.
3. People with hemorrhagic diseases, trauma or who is bleeding.
4. Pregnant women
5. Medical plastic artificial or metal parts inside the body such as metal teeth or silicone breast implants.
6. People with abnormal immune system.
7. People with numb or insensitive to heat.
8. If you are feeling unwell, Prohibited in the ears, nose, eye throat and do not use this device in advance and tell your doctor.
9. Children under 12 years old are not allowed.

### **III. Packing Including:**

- 1x main machine
- 1x PVC vacuum hose
- 1x Red PVC vacuum hose
- 1x power cord
- 1x Spray Gun
- 3x wands
- 3x glass tube
- 9x diamond tips
- 1 pack x filter



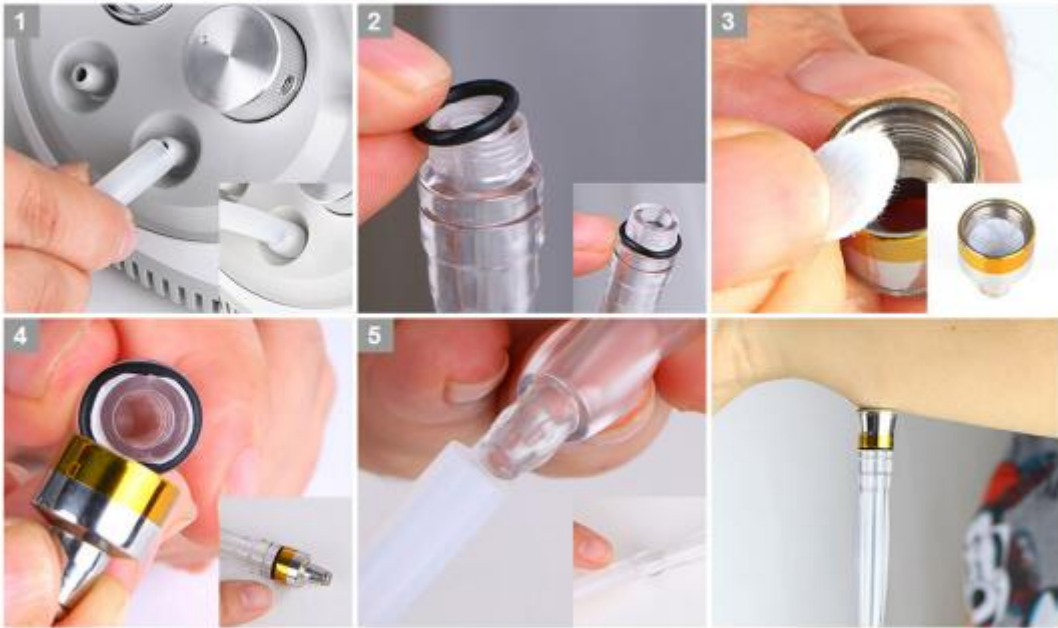
## Chapter 2: Before using

**I.** Before use, clean face with lotion and finish massage face to accelerate blood circulation.

**II.** How to install accessories.

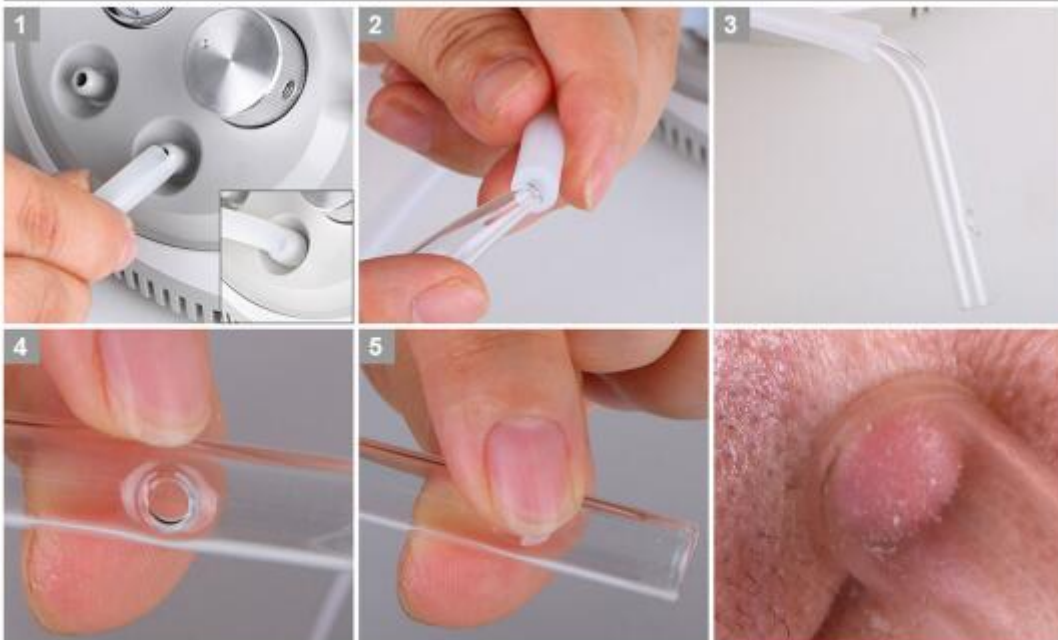
1. install filter and rubber band to wands.

### Diamond dermabrasion connection



2. install hose to machine hole and connect hose with glass tube.

### Blackhead vacuum removal connection



3. Connect spray gum with machine and hose.



## Spray gun connection



4. Connect power plug with the machine.

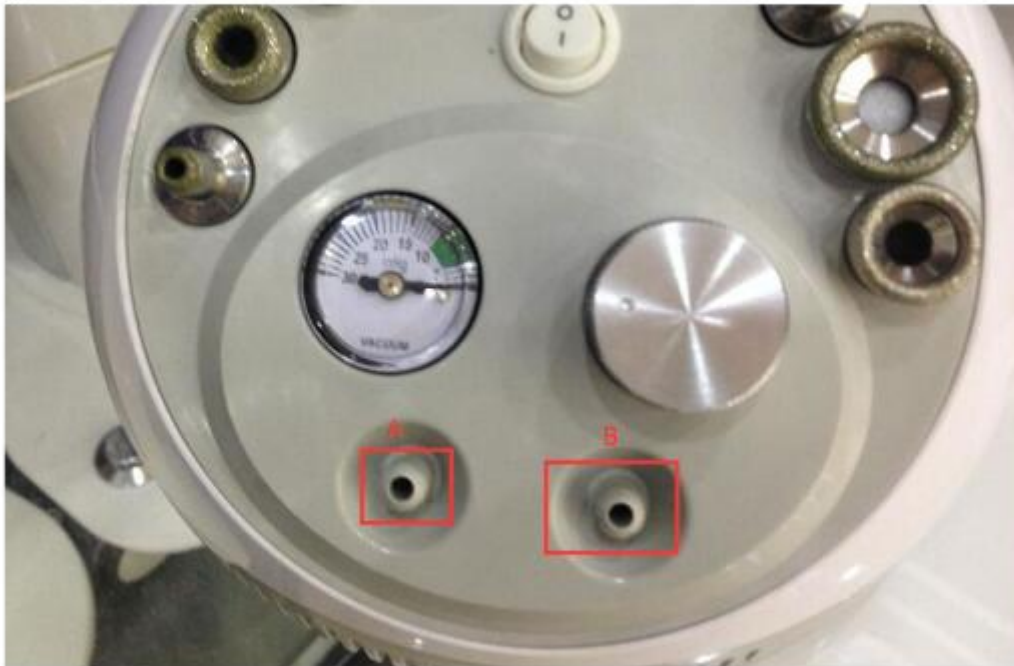


5. Press the power button to start/finish treatment.



### Chapter 3: program setting

I. connect the white hose to machine hole B with wands, connect red hose with Spray gum to hole A.



**II.** Turn the silver knob to adjust the suction of vacuum. Turn to right of the machine, make the vacuum suction at the highest level, turn to left of the machine, vacuum suction is the lowest level.



**III.** Choose the suitable microdermabrasion tips according to different treatment area and start the treatment, massage along the skin texture.

There are 9 different microdermabrasion tips for you choose:

1. Tips D240: Eyes and both sides of nose, for wrinkles, all blackhead and acne.
2. Tips D200: For Scars, fine lines and imperfections.
3. Tips D200: For Scars, fine lines and imperfections.
4. ips 120: body, especially for acne, knee, elbow area and striae of pregnancy.

### III. Operation guide

## Treatment procedure

01  
Skin clean and dry skin

02  
Apply the exfoliating cream/gel on the face cream

03  
Starting from the lower jaw, moving the rejuvenation from bottom to top.

04  
Place the dermabrasion wand on the cheek, and move the wand from the inside to the outside

05  
Place the dermabrasion wand on the forehead area, move it from middle to both sides separately

06  
Place the dermabrasion wand on the T zone, move the wand from top to bottom line by line





07  
Using toner to moisturize the skin, skin care products absorbing better.



08  
Skin clean by cosmetic cotton



09  
Do skin moisturizing & nourishing by sprayer jet

+ Treatment recommend +

1 treatment /week, 10 treatments/ course of treatment, 3 course of treatment need

**IV. Use the spary gum to make skin moisturize after use the diamond dermabrasion and glass tube. Hold the spray gum, like below:**



#### **Chapter 4: After using**

**I.** Do a hydrating mask after the treatment.

**II.** Next treatment should be after half of month.