

User Guide

MS-21P2



Preface

Dear users:

We're pleased to present to you 2-in-1 *Diamond Microdermabrasion Vacuum Peeling Skin Care Machine* that mainly targets at waste cutin, blackheads, excessive oil secretion or other gunks stuck in pores through vacuum technology to achieve pore cleaning. It addresses skin problems such as clogged pore, thick cutin, inelastic skin and so on. We aim at a safe and, at the same time, effective beauty result by using high-end technologies. 2-in-1 *Diamond Microdermabrasion Vacuum Peeling Skin Care Machine* is skin care machine for professional use, which needs to be handled by professionals with proper training. Any improper use will result in adverse consequences. Therefore we advise any personnel read this guide thoroughly and follow the instructions strictly before operation.

We believe our quality product will bring in good returns on your end. Also, you can count on our worry-free after-sales service.

Thank you!

Table of Contents

Preface
Part I
Brief Introduction
Advantages
Working Principles & Treatments
Deep Cleaning
Part II
1. Detailed Operations
2. Safety Precautions
3. Dos and Don'ts
4. Troubleshooting & Solutions
5. FAQs
6. Packing List
7. Operational Diagrams

Part I

Brief Introduction

Diamond dermabrasion and glass tube machines are currently the most popular beauty machines that work on deep cleaning of pores. It's an effective replacement of all the traditional facial cleaning programs in beauty salons. Moreover, it's convenient and easy to operate. It solves both skin management issues for beauty-lovers. This equipment requires no injection, no medication, no operation, thus having no side-effects. It is used externally during the whole process and has an immediate effect. Diamond dermabrasion adopts vacuum negative pressure suction technology to reduce internal air pressure, thus effectively removing wasted cuticle layer, sucking out blackheads and excess oil and other pore garbage, in a way achieving free breathing circulation of skin, which can dredge pores, improve pores and brighten skin tone.

Advantages

1. 2-in-1 beauty machine that works on your overall facial care.
2. Multiple working probes can be switched for different skin needs.
3. Special probes of dermabrasion can improve varies of skin problems and revive a clean face.
4. Painless, non-invasive during the process. Skipping any recovery periods without affecting any work and life plans.
5. No consumption, low cost and quick returns.
6. Deep clean, lift and refine skin.

Deep Cleaning

Principles

Microdermabrasion

The use of special micro-carved tube, inlaid with different thickness of fine steel particles, by the way of back and forth friction, and with the strength of vacuum suction control force, the skin will be shed a shallow layer of dead skin cells. It is non-invasive and physical. By removing dead skin cells from the surface of the skin, the regeneration ability and skin quality can be improved. After treatment, the skin will be slightly reduced, and the skin will become more smooth and tender. At the same time, combined with manual massage techniques also play an improving role in skin lifting.

Physical effects

Vacuum negative pressure suction technology is adopted to reduce internal air pressure, which can effectively remove waste cuticle, draw out blackheads and excessive oil and other pore garbage. Also, it helps achieve free skin breathing circulation, which can dredge pores, improve large pore sizing and brighten skin tone.

Glass Tube

It utilizes vacuum negative pressure to directly work on skin surface and achieve deep cleaning. (Negative pressure: it's below normal pressure. The use of negative pressure is very common. People often make use of the omnipresent pressure by creating negative pressure at some space. For example, when people breathe, negative pressure occurs when the lungs are in an expanded state. A difference in pressure is formed between the inside and outside of the lungs, and fresh air is pushed into the lungs.) Vacuum facial cleaning uses the exact principle in the state of no pain, achieving deep removal of various impurities such as blackheads, whiteheads and grease residue.

Effects

1. Remove dead skin cells.
2. Deeply clean and improve uneven skin texture.
3. Unclog pores.
4. Shrink large pores.
5. Effectively remove strawberry nose, acne and blackheads.
6. Deeply clean pores and dirt, and thoroughly clean the skin.

Applicable Range

1. Those with loose and inelastic facial skin.
2. Those with clogged pores and thick corneum.
3. Those with dull and lusterless skin.
4. Those with rough skin and large pores.
5. Those with high turnover of oil secretion and poor skin absorption.

Inapplicable Range

1. Those with severely sensitive skin or those in allergic phase.
2. Those with extensive facial trauma.
3. Those who are pregnant and those suffering from serious heart disease, severe three H's(hypertension, hyperlipidemia, hyperglycemia), serious diseases, etc.
4. Those with skin diseases and infectious diseases.
5. Those who have just received injection and are still recovering, such as intradermal injection, micro-needling, plastic surgery.

Notes after Operation

1. Wash your face with warm water within 3 days after operation.
2. Strengthen hydration and use sun protection.
3. Do not use stimulating skin care products including scrub, exfoliating and AHAs within one week after operation.
4. Avoid staying up late, smoking and drinking, and eat more fruits and vegetables and less greasy food.
5. Apply a hydrating mask once a day for three days.

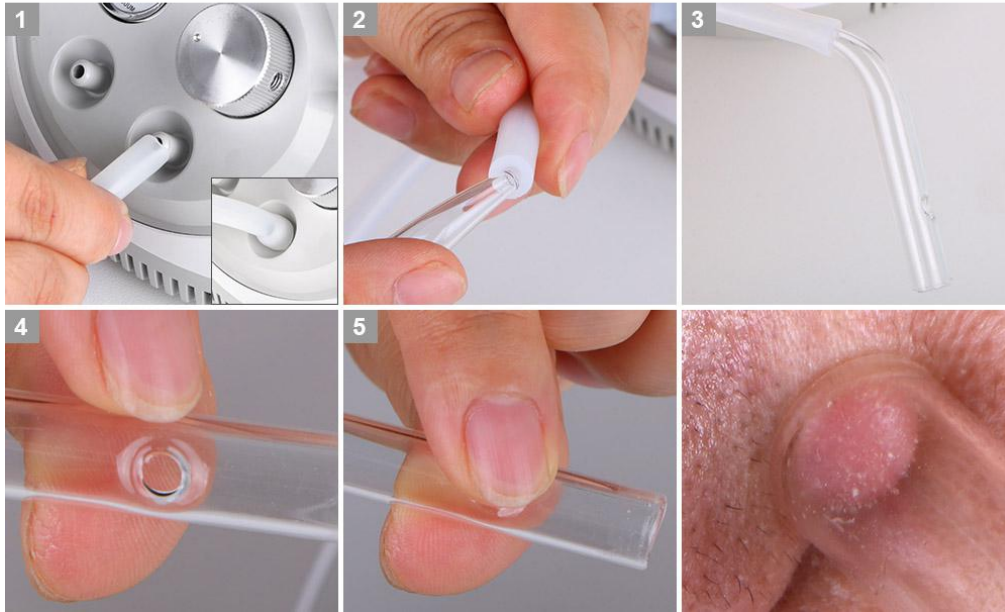
Part II

1. Detailed Operation

Detailed installation is as follows:



Blackhead vacuum removal connection



Cotton filter (Must be installed to filter dirt from entering the device and cause damage; Cleaning result can be seen on cotton filter)



On/off



Vacuum gauge



Vacuum suction (Adjust the suction level subjecting to your own

comfort level; Strong suction may result in petechiae)



Inhale hole (next to exhale); Connect one end of the hose with the inhale hole and another end the probe



Exhale



Select the tip of your choice from 9 diamond tips according to your own skin needs

2. Safety Precautions

Please consult your doctor or professionals before using the device if you have the following symptoms:

1. Those who are pregnant or lactating.
2. Those with heart disease or pacemaker equipped.
3. Those whose wounds have not healed and who are recovering from the operation.
4. Those with epilepsy, severe diabetes and hyperthyroidism.
5. Those with malignant tumor, hemophilia or severe bleeding.
6. Those with skin diseases and infectious diseases.
7. Those with metal implants in the body, such as stents and pacemakers, or who are allergic to metal.

3. Dos and Dont's

1. Use a grounding pin and make sure the power socket of the device is properly connected before each operation.
2. Ensure that the voltage of the device is appropriate. If the voltage of the local power supply is unstable, we recommend that users increase to the matching power voltage.
3. In order to ensure the therapeutic effect and normal service life expectancy of the device, please use the specified accessories provided or recommended by the original

manufacturer.

4. The device should not be placed in wet environment or near water, nor should they be directly exposed to sunlight.
5. Do not place the device near a strong heat source, because this may affect the life and normal use of the device.
6. Please restrain from using the device on eyes, thyroid, parathyroid, testicles, abdomen of pregnant women, and pacemakers.
7. Patients who are suffering from illness should consult with a doctor and gain permission from the doctor before using.
8. Please turn off the power switch of the device, and ensure that the total power supply of the device is turned off before the staff leaves after daily use, so as to ensure the safety of the electrical products.
9. Use device or train device operators in strict accordance with instructions in the user manual.
10. Start from the lowest energy level and slowly add up.
11. When using this device, the operating parts must be kept moist and dry skin should be avoided.
12. Avoid using on eyes and ear, around skin lesion or areas that went through plastic surgery.
13. Adjust the vacuum suction pressure subjecting to the your own comfort level accordingly.
14. Clean the instrument with normal saline after operation to ensure its cleanliness and hygiene to prolong its service life.
15. Make sure to distinguish inhale hole from exhale hole. DO NOT insert the microderabrasion probe into the exhale hole to avoid any possible damage to the machine.
16. Make sure to install rubber ring when operating microdermabrasion to avoid no suction or weak suction.
17. Make sure to install filter cotton when operating microdermabrasion to avoid filth being inhaled to the tube and damage the machine.
18. Please keep skin moist for a more comfortable experience during microdermabrasion treatment.

4. Troubleshooting & Solutions

1. The instrument can't start and the key lamp on the back of the instrument doesn't work?

- A. Ensure that the power cord is connected to a working power outlet.
- B. Ensure the fuse tube on the back of the instrument is not loose or being burnt.

2.No suction during microdermabrasion treatment?

- A. Please check whether the connection tube is well connected with the main machine.

B. Please check whether the connection tube is well connected with the microdermabrasion probe or whether the connection mode is correct.

C. Please check whether the scale of the vacuum gauge is reset to zero.

5. FAQs

1. Q: Will the skin become thinner and more sensitive after microdermabrasion treatment?

A: No. During the process, microdermabrasion operation is just to remove the skin aging cuticle. Our skin regenerates every 28 days, so it will only make the skin become more smooth, fine and glowing. Sensitive symptoms will not appear.

2.Q: Can I wear makeup after using this instrument?

A: Absolutely, the skin after treatment is moist and plump, makeup will actually last longer. This is a safe, healthy, quick and effective way of nursing without puncturing skin or leaving scars.

2. Q: How long will it take to see results?

A: After one treatment obvious results are shown, such as clean and translucent skin. It works even better on a continuous basis, improving skin problems such as dehydrating, darkening, fine lines and aging process in the deeper layers of your skin.

3. Q: Is it dependent?

A: No, this is for skin problems to improve and deeply clean the skin, which belongs to the maintenance and improving skin of malnutrition caused by other factors. It's used to help skin absorb nutrition products, solve other issues such as dark, yellowish skin, water shortage, rough skin, wrinkled skin. Without the treatment you skin will only go back to secretion of its own and aging, therefore not dependence factor is involved.

6. Packing List

1 x Main machine

1 x PVC vacuum hose

9 x Diamond tip





3 x Glass tube

6 x Rubber ring

1 x Cotton filter (pack)

1 x Power cord

7. Operational Diagrams

Parameter Adjustment	Product	Techniques	Diagrams
Deep Cleaning: 60 min, once/week			
<p>Microdermabrasion energy level: 20%-80% Operate according to different skin types of customers (try the set energy on lower arm first then on face, meanwhile check with customers constantly.)</p> <p>Glass tube suction energy level: 20%-80%, Operate according to different skin types of customers (try the set energy on lower</p>	<p>Makeup remove+ Facial wash+ Blackhead export liquid+ Cold and hot steam+ Serum+ Sheet mask+ MS-21P2</p>	<ol style="list-style-type: none"> 1. Remove makeup and clean face, 5 min. 2. Apply blackhead export liquid+hot steam (on large pores or clogged area, and toner on cheeks; for sensitive skin it is not recommended to do so but apply toner+cold steam) 5-8 min. 3. Microdermabrasion operation on T zone: (Select D150/D180/D220 diamond tip) Stay on forehead for one sec, then gently twist and leave it up in the air(forehead→nose→chin) 5min, (it can also be done with vacuum hose.) 4. Microdermabrasion operation around nasolabial folds: (Select D160/D180 diamond tip) Slide back and forth on the treatment area, 1 min. 5. Microdermabrasion operation on cheeks: (Select D100/D120 diamond tip) Move from chin to earlobe, month corner to ear gate, 	<p>Technique4</p>  <hr/> <p>Technique6</p>  <hr/> <p>Technique9</p>  <hr/> <p>Technique11</p>  <hr/> <p>Technique14</p>

arm first then on face, meanwhile check with customers constantly.)

nose wing to temple to lift the treatment area. Move in parallel lines with one line next to another, 1-2 min.

6. back and forth on the treatment area, 1 min.

7. Do the same on the other side.

8. Glass tube double cleansing.

9. Forehead operation: (Select the flat tube) Start from eyebrow and slowly move towards hairline, covering the entire forehead, 1 min.

10. Nose operation: (Select the long tube) Move slowly around nasolabial folds, 1-2 min.

11. Chin and cheeks operation: (Select the curve tube) Move slowly from chin to earlobe, mouth corner to ear gate, nose wing to temple to lift the treatment area. Move in parallel lines with one line next to another, 1-2 min.

12. Do the same on the other side.

13. Clean the treatment area, 1 min.

14. Ultrasonic nutrition lead-in operation: Drip serum on the treatment area while moving the probe in circles, tracing from chin to earlobe, mouth corner to ear gate, nose wing to temple to lift the treatment area, 2-4 min.

15. Move vertically towards hairline on forehead, meanwhile brace the skin



		<p>with the free hand to keep the treatment surface tight, 2 times.</p> <p>16. Do the same on the other side.</p> <p>17. Apply facial mask+LED photon mask (Select blue LED), 15 min.</p> <p>18. Remove masks and wash face clean, 2 min.</p> <p>19. Apply toner, serum, cream, and sunscreen.</p>	
<p>Recommended treatment:</p> <p>10 treatments account for one full course. After one treatment you will feel a clean, smooth and less course skin. After one full course you will see your skin is smooth, fine and glossy. After two courses your skin will be tight, glossy, and full of elasticity. Three courses help your skin remain elastic, glossy and rosy.</p>			