



WL-7008CB

Instructions

Warning

Dear users:

Thanks for choosing our company's product, in order to fully make use of the products, we sincerely suggest follow:

- ◆◆ Please read the instruction in detail and keep it well for further reading and consulting.
- ◆◆ Please follow the instruction to fit and operate the machine correctly.
- ◆◆ Please do not remove and change any accessories of the machine.
- ◆◆ It forbids others to open and remove the mainframe except the authorized people in the company.
- ◆◆ It forbids others to change and maintain the machine except the professional people.
- ◆◆ Please contact us if there is any trouble during operation.

After Sale service

◆ We offer ONE YEAR warranty. Within warranty period, all exchanges or replacement due to defects are free. (Buyer is responsible for shipping charges). If the machine is over warranty, please also do not hesitate to contact us. we will assure you of our best service all the time.

◆ How to contact us?

Phone:(+86) 189 -487-55929

Tel: 0755-86368500

Email: sales@mychway.com

This product does not belong to medical, please don't use for disease treatment!

Please read the NOTES carefully before use Machine.

1. Please make sure the tank is filled with water before start machine .
2. Please put at least two pieces membranes on treat area before start treatment .
3. Please clear the filter in time .otherwise it will cause residual liquid to be poured into the machine and burned out parts .
4. we recommend each area treat time do not over 30mins.over 30mins ,please do not allow clients stay alone,need to check client situation in time.
5. During treatment ,check skin condition every five minutes.
6. If can not feel cold in one minute , please stop and check the condition of machine.
5. Please change water once a day.
6. Patients using the following medical electrical equipment can not use the equipment.

Implanted cardiac pacemakers or other implanted electronic devices;

Life-sustaining artificial heart-lung machines and other equipment;

Portable ECG measurement equipment;

The following patients should be agreed by the professional doctors before using the equipment.

Patients with acute

Malignancy

Patients with Infectious

Menstrual period women

Pregnant women

Patients with heart

Patients with fever

Patients are receiving operation or those with abnormal body phenomenon;

Safety Notice

1. Please don't disassemble the equipment or try to do some other operation, which haven't been indicated in our instruction. All the repairing work should be done by our admitted professional personnel
2. Please don't assemble or operate this equipment while you are near the water or your hands are wet. Notice that don't pour the liquid on it.
3. Please pull out the plug from the socket when you met such conditions as below. And in touch with professional maintenance Station.
 - a. The equipment touched liquid
 - b. The equipment has abnormal smell, smoking or loud and strong noise.
 - c. Cable is broken
 - d. The equipment is fallen down and broken
4. Please don't put anything on the cables, don't place the equipment at any place where someone can step on the cable.
5. Please pull out the power cable after using it for your safety
6. Don't put anything into the equipment's jack, otherwise it may cause fire or touch the electricity. If something enters the equipment, please don't pick it out by yourself, contract distributor or our company immediately
7. Please don't put the equipment on the anything that can't stand steadily, avoid it turns over and damage.
8. Our company has the right to modify the information in this introduction before notify! And keep the explanations right for the above.

Operation Notice

Before operation, please read the following content.

1. It is essential to make different setting according to specific treatment demand.
2. The application of The machine must never be painful and cause redness to the skin or leave marks.
3. Do not apply the device on children less than 7 years old. The treatment to children over 7 requires medical advice.
4. Do not use this device if suffering from a fever, inflammation, dermatitis (acne, eczema, herpes), warts, open or recently stitched wounds, serious and progressive illnesses (cancer, AIDS, hepatitis, blood diseases, etc. or blood coagulation problems. Do not apply the device if you have or have had phlebitis, after veins surgery within the last two months, if you have varicose veins or tingling in your limbs, if you have any concerns consult a physician.
5. Never use the device on a pregnant woman.
6. The machine could be used on all external and healthy areas of the body except the eyes, throat, ears, glottis and the genital area.
7. Must not be applied inside the mouth, or on mucous membrane, or on nipples, or moles without medical advice.

8. Never use the device if you suffer from epilepsy. The device must not be used by any person suffering from mental illness.
9. In the case of long-term treatment with drugs such as anti-inflammation, anticoagulants, antibiotics or if your skin bruises at the slightest shock, ask advice of your doctor/physician before using.
10. Never apply to the body parts with jewelry or ring.
11. Regular use of The machine enhances well-being; it is better not to stop its use for a prolonged period of time. Not following operating instructions and usage recommendations may bring lesser results than expected. Do not use the device longer than the recommended time
12. If your symptoms have no improvement, or if in any doubt on the use, consult your doctor.
13. Effect may vary depending on your age, life habits (level of physical activity, diet, etc.).
14. The machine can be used after any plastic surgery only while following the instruction of the surgeon.
15. The Machine continuous working time shall not exceed 1 hours.The best way is cut the power off,let the machine have a rest for 20-30mins. After the machine have worked for a hour.
16. Never use the strong acid or strong base or alcohol clean the machine. (use physiological saline to clean machine.)

Treatment Therapy

Fat freezing

As triglyceride in fats will be converted into solid in particular low temperatures, it uses advanced cooling technology to selectively target fat bulges and eliminate fat cells through a gradual process that does not harm the surrounding tissues, reduce unwanted fat, When fat cells are exposed to precise cooling, they trigger a process of natural removal that gradually reduces the thickness of the fat layer. And the fat cells in the treated area are gently eliminated through the body's normal metabolism process, to eliminate unwanted fat.

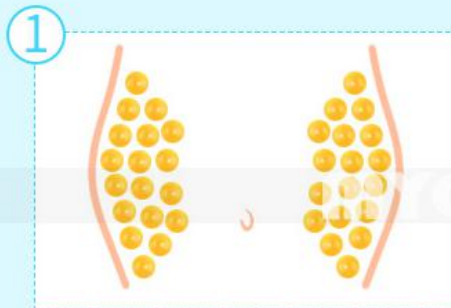
Significant curative effect

You will be able to create a charming body in 30 minutes of time ,
after the first treatment ,the effect will probably appear in 4-6 weeks later ,
and gradually achieve the best result in the next 3 months.



Treatment principle

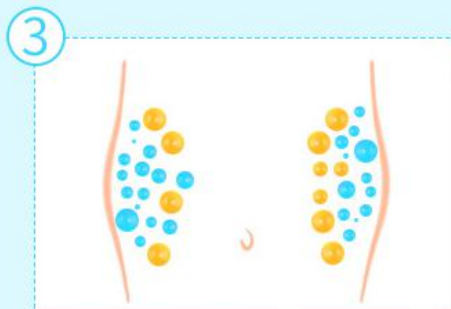
Apoptosis is the ideal exposure of -5°C cooling energy for non-invasive fat reduction.



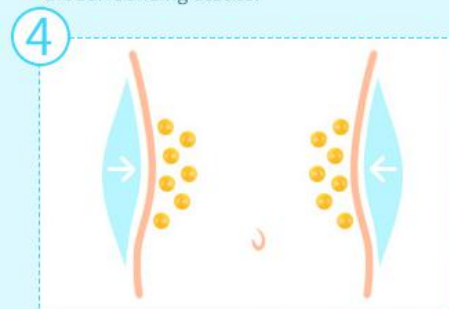
As triglyceride in fats will be converted into solid in particular low temperatures.



It uses advanced cooling technology to selectively target fat bulges and eliminate fat cells through a gradual process that does not harm the surrounding tissues.



When fat cells are exposed to precise cooling, they trigger a process of natural removal that gradually reduces the thickness of the fat layer.



And The fat cells in the treated area are gently eliminated through the body's normal metabolism process, to eliminate unwanted fat.

Parameter

Rated input voltage: AC220V-240V 50HZ / AC110V-120V 60Hz

Rated input power: 350VA

Cool cold slimming Vacuum

Power: Up to 200W

Cooling device output temperature: 5~ -5° C

Cooling device output: 0-5Kpa

Cooling liquid: purified/ distilled water

Packing list

1* Fat freezing main machine

1* Body Cooling handle

1* Chin Cooling handle

2* Handles holder

2* Filter

2* Keys

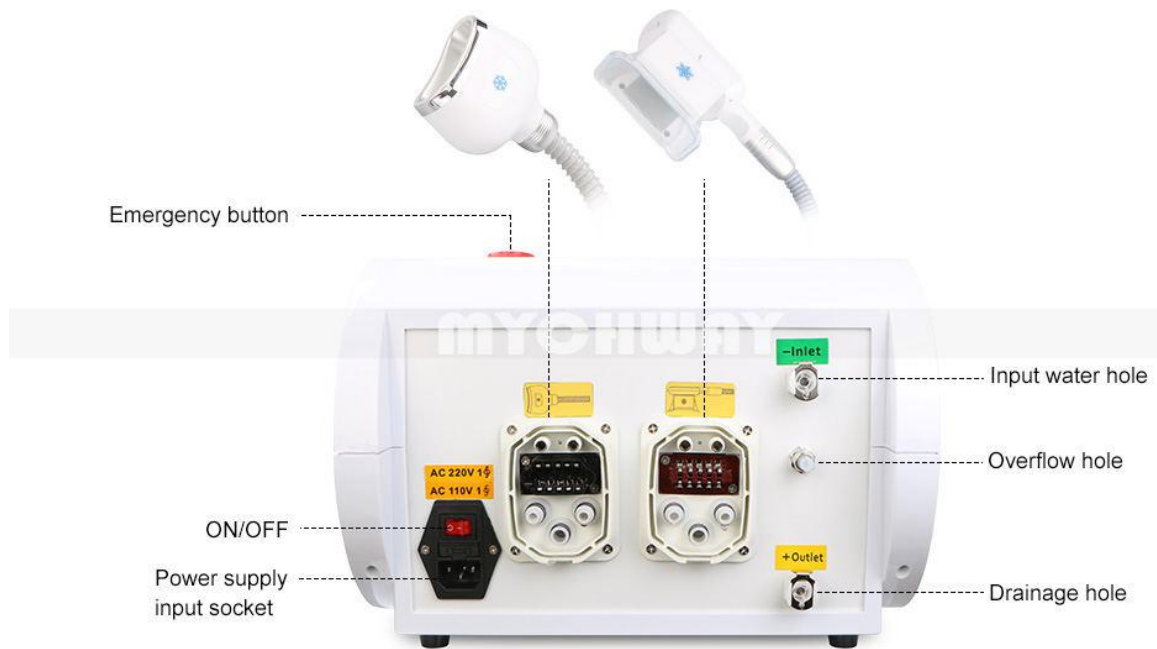
1* Power line

10* Anti-freezing Membranes

Machine Front View



- A. Emergency button
- B. Key switch
- C. Chin cooling handle
- D. Body cooling handle
- E. Color touch screen
- F: Suction adjust button



Machine Back View



How to add water (only purified / distilled water) ?

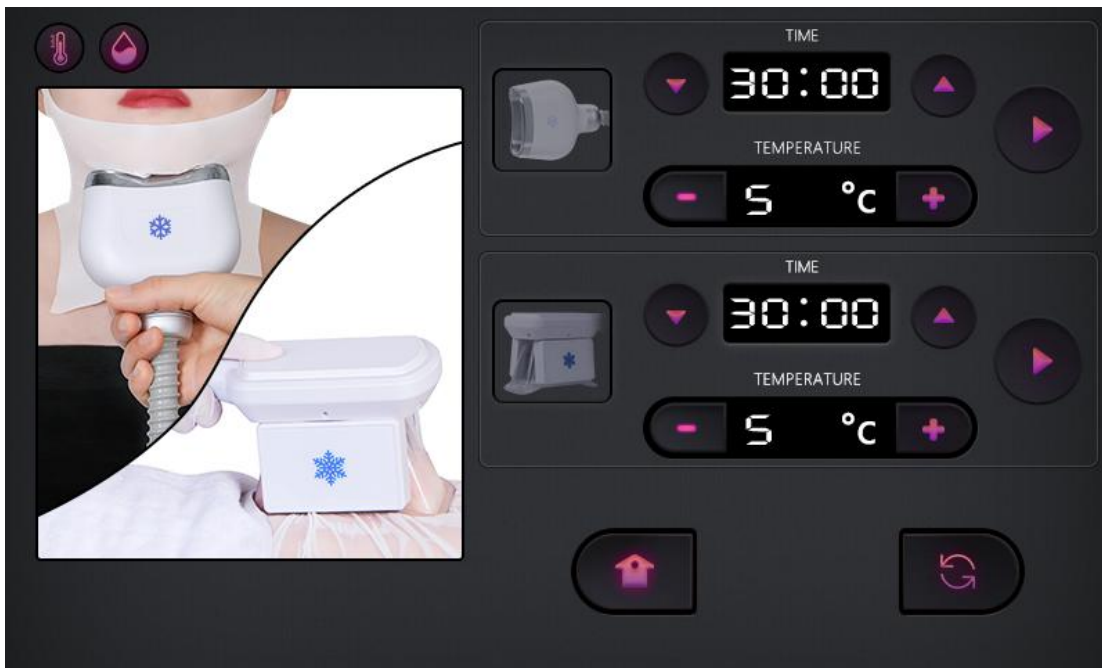
1. Put the funnel in the INLET hole
2. Take out the rubber from the middle hole (Overflow)
3. Input water with pipe
4. Input water until water go out from the overflow hole, that means the machine already full of water
5. Put the rubber back and take out the funnel
6. The OUTLET hole is for put out the water, when you want to change water, put the funnel in this hole, then water will go out directly.

Notice: When receive the machine, it must add the full water , then start the machine .Every week must add some water , every month must run out off the water and add fill again .Water source : pure water or distilled water.
when treating Cryolipolysis, the best temperature set : -5°C - 5°C .The handle cannot treat above neck, navel and bone. During treating, please attention and ask the customer's feeling . If patient falls too cold or uncomfortable, please button "emergency switch" to stop the machine.

Operation

After full of distilled/ purified water, put in the power line, then turn around the key switch to turn on the machine, and screen will show you “Welcome” and loading page

Main operate page



Auto Temperature Alarm System

the machine will automatically stop working to protect the person during treatment if the temperature up to 40° C



With intelligent indication system

the water icon will be dark once the water circulation system i error, you can easily to get the information of water circulation, as well as the machine will stop working automatically.



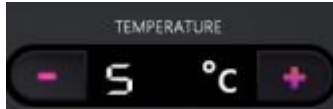
Chin cooling handle



Body cooling handle



set up the operate time (0 ~ 30 mins), according to the customers need.



set up the temperature (-5 ~ 5 ° C), Please analyzer the fat part status, then according it, to adjust the temperature



Start / pause treatment



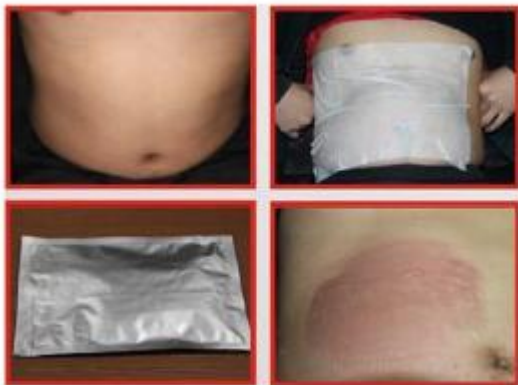
Reset the parameter



Back to home page

Fat freezing treatment operation

1. Clean the skin first, then smear the products onto the treated skin, please use anti-freeze when work with cryolipolysis handle.



2. According the client's fat part status, adjust the Intensity and the Vacuum mode and Working time.
3. Turn on the Cryolipolysis system. Working on the body. At the same time, you can adjust the intensity of the system by the button on machine.
4. After treatment, please pause the working, then switch off the power. Clean the spare parts and place them in original.

Treatment settings

1. The treatment time at each body site is 20-30 minutes (depending on the thickness of the fat and health status).

Notice: Suggest first treatment for 8-10 minutes to test, then if everything is ok, can start treatment for 20-30 minutes.

2. Eliminate body fat part by part, i.e. it is required to complete a few courses to eliminate the fat of the entire waist.
3. After a course, take another freezing process to treat the same location for 2-3 months, which can reduce the excess fat thickness. Such a secondary treatment can consolidate the fat dissolving effect, but multiple treatments are not recommended.
4. Fat freezing treatment is designed for those physically healthy people who have local fat deposits, but not suitable for the one with overall obesity. It can target at the fat at a specific part, such as waist, abdomen, back, etc. The treatment is not a panacea, it can not treat obesity. It is not a substitute for liposuction or other invasive treatments. Substantial weight loss should be achieved through a balanced diet and regular exercise, Fat freezing treatment can only eliminate the extra fat.

Notice

1. Be sure to use the special ultrasonic gel.
2. Avoid knocking the us head.
3. For avoiding burning the head, during operation, please prepare enough ultrasonic gel.
4. Don't stay in one place, avoid treating on the bone.
5. Don't use disinfectant product to disinfect the us head. We suggest the wet cotton or dry towel enough.
6. Check the machine power cord if it is connected well.
7. If the machine will not use for a long time, please switch off it, and power off.
8. Please take off all metal decoration from the operator and patient's body.
9. If continuous using 1 hour, please pause the machine about 10 minutes, then using again.
10. During the operation, be sure not to accept other treatment.

AFTER-SALE SERVICE AND MAINTENANCE

The term of maintaining guarantee is main device 1 year and spare part 3 months from the date of purchasing according to the receipt. (Expendable is not included in it.) Others not included in maintaining guarantee or over the time, we also supply to maintain and renew but need charges. Please contact with the dealer if need change of purchasing the parts and easily expendable products.

A. We will guarantee the quality of our equipment, normally there is no quality problem

1. If there is a deficiency, please email or call us on the reasons, it would be best to dealt with by email or telephone. Because some of the problems are caused by using the machine in a wrong way.

2. We suggest the client to take photos of the area where the problem occurs, we will pass them to our technician , our technician will give a satisfactory answer within 1-7 working days

3. If the problem comes from the spare part within the warranty, we could consider in changing the spare part to our client, which could be sent with his/her next order.

B. We won't supply maintaining guarantee if troubles as below:

a) Disassembling the machine by self;

b) Fall it without caution;

c) Lack of reasonable keeping and protect;

d) Not operate according to the user manual.

e) Expendable reasons

If changes of the design and specification of the machine, we will not notice you in addition. If any queries, please feel free to contact with our company.

All in one, we will try our best to serve you and also need your fully cooperation. Thanks.

Product name :	Purchase date :	deadline :
Seller :	Add. :	Tel. : (+86) 189 -487-55929
Customer :	Add. :	Tel. :
Repair date	Reason of the fault	Repair content
Maintain list		