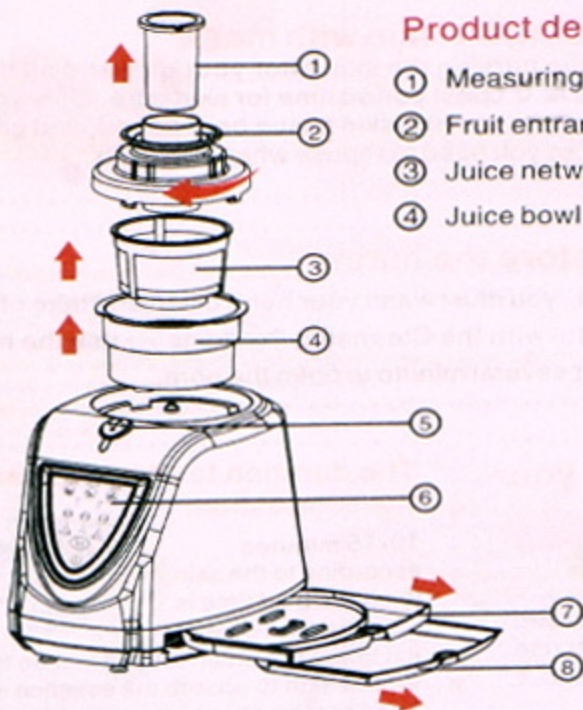


Product introduction

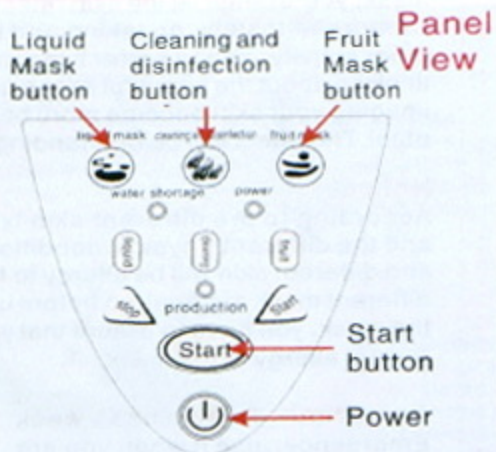


Product decomposition Introduction

- | | |
|------------------|--------------------------------|
| ① Measuring cup | ⑤ Water inlet and liquid inlet |
| ② Fruit entrance | ⑥ Panel labels |
| ③ Juice network | ⑦ Mask molded tray |
| ④ Juice bowl | ⑧ Leak proof cleaning tray |

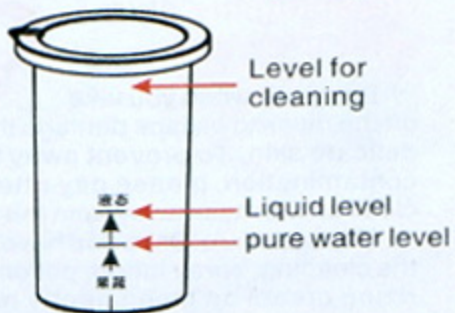
Notes before use

1. Cleaned once before use product.
2. After used it and clean it immediately.
3. When you use it, do not cut the electronic off or remove it.
4. The product should be keep in the place which the kids can not received. And avoid the children using it.
5. About the other attention, please read the beauty collection about the product Precautions.



(Other for indicator light display area)

Cup diagram



Introduction:

1. Liquid mask = Pure water + Liquid
2. Fruit mask = Pure water + Juice

Product cleaning process



1. After completion of mask making, need to press the clean button.



2. Press the cleaning and disinfection key (will be prompted to dry and add water)



3. Add a cup of water (refer to the measuring cup cleaning water level)



4. Add water and press the start button, wait to complete the cleaning (about 5 minutes)



5. Use the brush to clean here, while you are waiting to complete the cleaning process.








5. Use the brush to clean here, while you are waiting to complete the cleaning process.



6. Take out the forming tray and drain the washing water (hear the prompting stop sound and stop lights flashing)

Warning:
After you have made the mask, you must to wash it for more than 2 times (no less than 2 times)

Product panel instruction:

-  **Switch:** Before using this product, you must first press the function button
-  **Fruit Mask button:** start to make the fruit mask
-  **Liquid Mask button:** start to make the liquid mask, for example: milk, wine
-  **Cleaning and disinfection button:** you only need to add the water then you can clean the machine.
-  **Start button:** all the machine can be start by this button

Operation before using



1. Power cable connected host



2. Plug in the power



3. The power turns red (indicating normal standby)



4. (3 seconds after power on) by pressing the power switch, all function lights lit



5. At this time, choose to press cleaning button (add water to wash)

Notice:

1. Need to be cleaned once before using!
2. No go into this operation before the description of the operation.
3. If you need to make the liquid mask when you have finished the fruit mask, need to clean it for more than 2 times.

Production process of Liquid mask



1. Select the liquid mask key and the liquid light flashes.



2. Add the liquid material (raw liquid and water mixture, not the original liquid material)

(Liquid level (raw liquid + water)



3. Add one collagen



4. Replace the inlet cover



5. Press start button



6. Wait for the completed (about 5 minutes)



7. Take out the forming tray to cool for 5 minutes

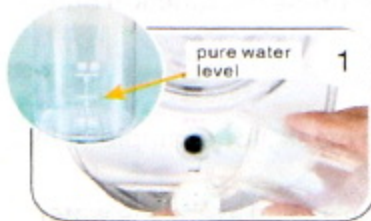
Introduction:

Figure 2 plus liquid raw materials usually refers to a mixture of liquid and water.

Notice:

Like the milk mask, put the mixture of the pure water + cup in measuring cup, then pour into the outlet.

Production process of Fruits and vegetables facial mask



1. Add purified water (refer to the measuring cup water level of fruit and vegetable)



2. Add vegetable (cut large into small pieces)



3. Choose fruit mask key, fruits lights flashing



4. press Start button, fruit and vegetable motor starts working.



5. Press the fruit feeding port lightly with the measuring cup.



6. After the motor stopped, add one collagen



7. Replace the inlet cover



8. Wait for completed (about 5 minutes)



9. Take out the forming tray to cool for 5 minutes

Introduction:

The vimineous shap, for example the cucumber and the cuke (no need to cut into small pieces. After the fruit motor started, just press lightly as the photo S1 shows. Other large one need to be cut into small pieces then put them in, as the photo 2 shows.

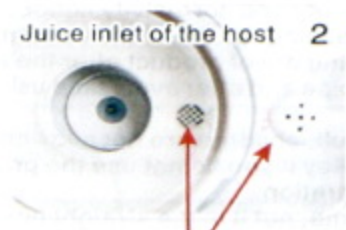


Cleaning of the container of the fruit and vegetable



About the juice network, juice bowl and the cover washing, just rinse with water directly.

Replacing step after cleaning



After the cleaning, for the convenient of the next time using, we have to replace the product when it is dry or dry it with a soft cloth directly.

Six rules of mask using

1

You would better do a "patch test" before using the mask. Put a little mask dressing on your inside wrist or behind the ear and clean it after 15 minutes. You can apply the mask if there is no allergy reaction. Take off formal dress and ornaments and keep the face cleaned before apply the mask, at the same time, you can exfoliate to enhance the absorbing effect of mask if necessary and to prevent the dust from getting deep into the pores.

2

Before applying the mask After you have cleaned, you can put the hot towel over your face for three minutes also with a little energy cream on it, then massage the face for 3 to 5 minutes to improve the effect of the mask. There is no limit time during the mask, and you can take it off during 20 minutes from up to down, because it is the Collagen Mask with no gauze. Generally we can peel off slowly from bottom to top no about 20 minutes. Then put the cold towel on your face for a moment to improve the pores contraction. Finally, coated with skin care products.

3

Traditional mask will make the moisture absorption because of the dry mask and make skin tightening, wrinkling. The mask, comes from the Li Hua intelligent mask machine, without woven fabric and chemical addition, which can attach to the face for a longer time with better absorption. For normal healthy skin, 3 times a week is enough. The face with acne, chloasma, age spots or wrinkles can apply once a day to enhance the effect.



Six rules of mask using

Li Hua intelligent mask machine, control by computer ,makes a piece of mask one time. After finish , you can put it on you hand or neck, and the red wine and papaya mask also has a magic breast enlargement effect.

4

Stay up late to work, play for a whole night... when the body is overworked, skin will become dark, dry and rough. At this time, a lot of girls will apply mask for themselves to let the skin restore luster immediately. If we choose to apply the mask we made, just try to reduce the fruits and vegetables appropriately to alleviate the adaptation of skin.

5

If human stay in a overworked condition, the skin will also with pressure and being vulnerable and hard to repair. The nutrition of the mask is like the big supplements of skin. The nutrition of the mask was permeated to the skin ,As we try to restrain the breath of pore in a short time and speed up the face bloodcirculation. If you apply the mask when you are tired, the outside nutrition will transfer to the destroyer, who keeps the skin unbalance. That will stimulate the skin easily or the skin will comeout with red rash and stabbing pain conditions. so we should reduce the content of fruits andvegetables appropriately.

6

