



SR-MJ1704

Instructions

Warning

Dear users:

Thanks for choosing our company's product, in order to fully make use of the products, we sincerely suggest follow:

- ◆◆Please read the instruction in detail and keep it well for further reading and consulting.
- ◆◆Please follow the instruction to fit and operate the machine correctly.
- ◆◆Please do not remove and change any accessories of the machine.
- ◆◆It forbids others to open and remove the mainframe except the authorized people in the company.
- ◆◆It forbids others to change and maintain the machine except the professional people.
- ◆◆Please contact us if there is any trouble during operation.

After Sale service

◆We offer ONE YEAR warranty. Within warranty period, all exchanges or replacement due to defects are free. (Buyer is responsible for shipping charges).

If the machine is over warranty, please also do not hesitate to contact us. we will assure you of our best service all the time.

◆How to contact us?

Phone:(+86) 189 -487-55929

Tel: 0755-86368500

Email: sales@mychway.com

This product does not belong to medical, please don't use for disease treatment!

I. Function Introduction:

1. Diamond Dermabrasion:

Diamond Dermabrasion provided a non-surgical skin refinish procedure, by using sterile diamond heads to abrade or rub off the top skin layer, then vacuuming out the particles along with any dirt and dead skin back up. This procedure removes skin debris, imperfections, blemishes, wrinkles and unwanted pigmentation on the skin. Moderate usage of Diamond Dermabrasion, accompany with skin products that penetrate through top skin layer that reach the dermis level, helps to replenish natural nutrients, restore cell activity, and promote skin health. The results after Micro Dermabrasion treatment is usually a healthy, glowing, beautiful skin.

2. Oxygen Jet

Nutrition or cosmetic product can be filled into the stainless steel bottle. With high pressure, the nutrition and oxygen are sprayed on the skin area which greatly enhance nutrition to be absorbed maximally, skin cleaning and skin rejuvenation.

3. Blackhead Vacuum

The vacuum function is used to clean the dirt and blackhead in the pores through suctioning tubes. It can also increase blood circulation of the skin. It helps improving the skin elasticity and can decrease discoloration from acne and scars.

4. Galvanic

Galvanic function adopts international high-tech technology, which enhances the effect of intelligent negative ions, massages facial acupoints and channels, helps stimulate collagen production to reduce wrinkle, makes face lifting, achieves the effect of facial beauty.

II. Package list

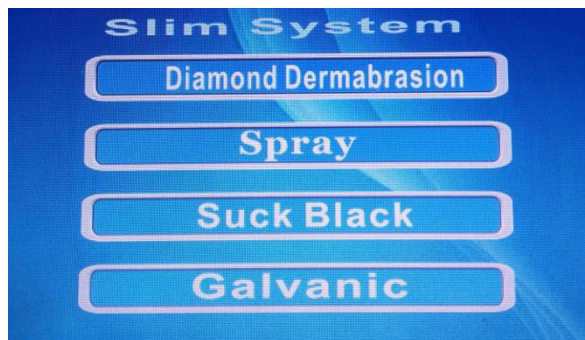
1. Host 1set
2. O2 sprayer 1pc
3. Diamond tips 9pc
4. Stainless steel wands 3pc
5. Galvanic lead-in/out handle 1 pc
6. PVC vacuum hose 1 pc
7. Glass tube 1 pc
8. Holder for handles 1 pc

III. How to install the Accessories



IV. Treatment Introduction

Please press the power switch behind machine, then the screen will show the following menu image:



1. Diamond Dermabrasion



1.1 Operation:

1.1.1 Push in the movable ring of copper nozzle at the hand piece

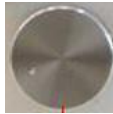
1.1.2 Put a drop of cream or milk lotion on the vacuum hose nozzle, push in the movable ring and insert in the vacuum hose to the limit.

1.1.3 Insert a cotton filter into the Diamond Head, then tight up the Diamond Head on the hand piece. Remove the cotton swab after every treatment. (like #1)

1.1.4 Turn on the power switch.



#1

1.1.5 Adjust the Vacuum intensity by Vacuum Regulator  (The big silver button behind machine) according to the following reference table, the intensity displays on Vacuum gauge and check with the client for comfort.

1.1.6 Use the incline area of Hand piece to contact with the skin surface. Proceed with a slow sliding motion. Do not place the hand piece at one spot for too long, doing so will cause harm to the skin.

1.1.7 Adjust the intensity slowly from minimum to maximum. For commonly use, do not set the intensity maximum unless it is of necessity. This is for better comfort.

1.1.8 Gently stretch the skin with thumb and finger and glide the Hand-piece 2 to 3 times over the area being treated. Then cross again in different directions to prevent streaking lines as in the reference picture. Brush strokes or polishing motions may be used in different sites.

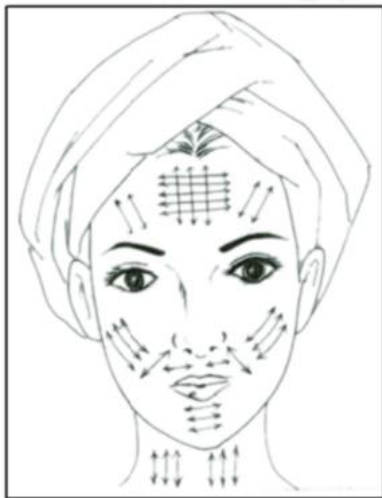
1.2 Recommended vacuum intensity on treatment area:

Treatment Area	Normal Skin (inHg)	Sensitive Skin (inHg)
Face	12-22	8-12
Forehead	12-22	10-12
Chest	15-20	15-18
Nose	10-15	10-14
Neck	18-18	10-15
Near Eye Area	8-12	8-10

1.3 Treatment schedule table:

Treatment	Frequency (days)	Total Visits
Face Peeling	6-10	3-5
Fine Lines	7-13	6-8
Neck	12-14	3-5
Acne Scars	7-12	8-10
Hyper pigmentation	7-12	8-10

1.4 Diagram of suggested movements and areas for dermabrasion:



2. Spray



2.1 Operation:

Please connect the spray gun with the black or red tube. Then add some water into the spray



gun, then setting up the time you need, then press the button on gun



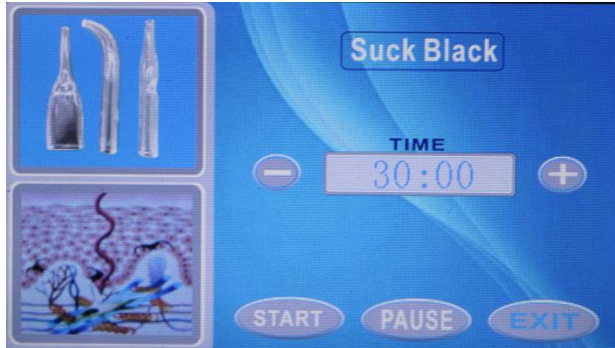
then you

will the mist spray. Usually, the treatment time is about 15-20 minutes.

2.2 Use the spray gun to make skin moisturize after use the diamond dermabrasion, hold the spray gun, like below:



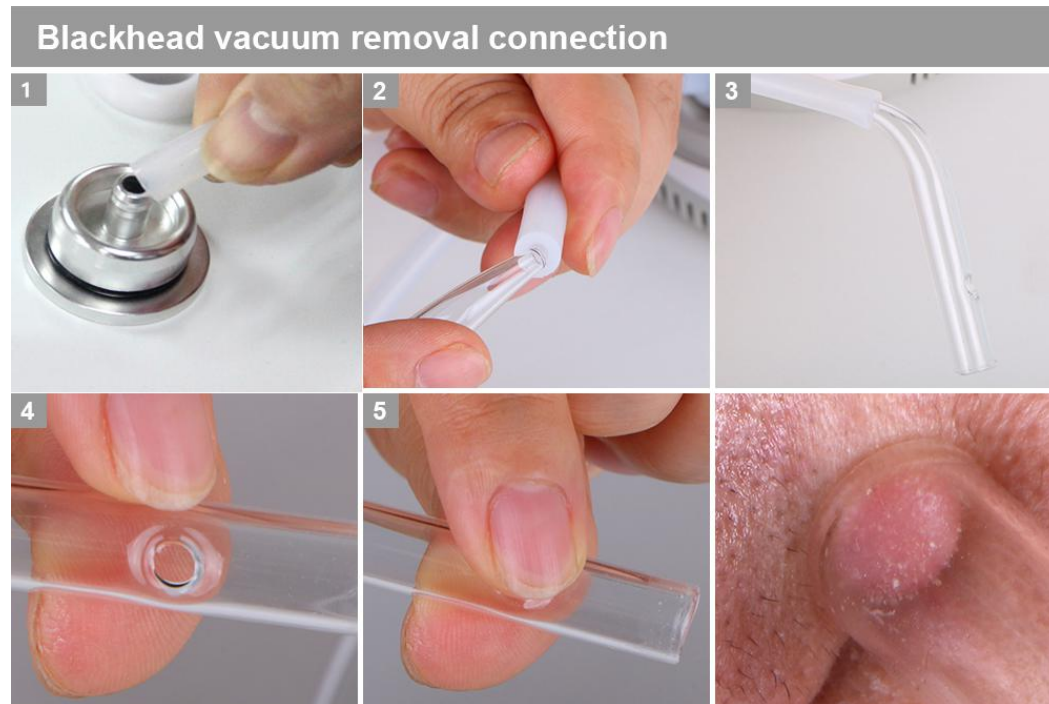
3. Blackhead Vacuum



3.1 Operation:

- 3.1.1 please connect tube with suck output socket behind machine. like #1
- 3.1.2 please put the glass tip into the tube. like #2, #3
- 3.1.3 please hold the hole on glass tips when working. like #5
- 3.1.4 please move away from the hole after treatment. like #4.

3.2 Connection:



4. Galvanic



4.1 Operation:

4.1.1 There are 3 pairs galvanic tips. Chose the electrode that best desired treatment and insert it into the Electrode handle and tighten the secure head to prevent dropping the electrode. When working, please hold the two handles together. To select the desired energy intensity, then press the “ Start “

#1 pair tips: cheek, forehead

#2 pair tips: cheek, forehead,Both sides of the nose

#3 pair tips: eyes, lips around



Note: A. Before use, clean face with lotion and finish massage face to accelerate blood circulation.
Then add some essence on skin.

B. Please adjust the energy from low to high intensity under customers' tolerance.

V. Attention:

Never operate this equipment on a person has or suffers from the following medical conditions described below. (The salon or operator may consider having a client sign a waiver to the effect that he/she is free of any poor health conditions.)

1. Heart Disease
2. Heart Murmur or Irregular Heart Rate
3. Has a Pacemaker or other type of heart rate balancer.
4. Pregnancy
5. Epilepsy
6. Alcoholism
7. Ulcers
8. Disease of Stomach, Intestine, Liver, or Pancreas.
9. Breast Cancer.
10. Undergoing treatment for any form of Cancer.
11. Had major surgery within the past year.
12. Asthma
13. Cold, Flu, or Upset Stomach
14. Any serious illness or disease not listed above.

VI. Do not use on these areas:

1. Sensitive Skin
2. Skin Rash
3. Damaged, Inflamed, or Infected Skin.
4. Surgical scar less than 12 months old.
5. Skin Swollen.
6. The probes can not point to Eye ball.
7. Genitals.