

FACE & EYE BEAUTY MAGIC WAND



MANUAL

CLASSIC & LUXURY FOR BEAUTY



Beautiful Skin, Fashion Life, Technology Creates



Product Name and Instruction

Name: Face and Eye Beauty Magic Wand

This is Multifunction home use personal care beauty device, which combine with many functions of SPA beauty machines (PDT device, Micro-current device, Ion device and vibration massage device), make it become a mini multifunction beauty device, more suitable for carry to anywhere. In this fashion day, skin care products is a necessary health products for ladies, people are pursuit effective and quickly skin care method. This home use beauty device match with the skin care products, can make skin care product have double effective. The device designed by a European designer, with high technology of beauty industrially, make you skin more young and beauty.

The Main Features of the Device

- A: Both suitable for face and around eyes.
- B: Import function and wrinkle removal function together.
- C: Easy to use it , only two buttons control whole device.
- D: Smart type, carry it anywhere.
- E: Elegant design, fashion and beautiful.
- F: High Quality, use class A material and good process.
- G: USB rechargeable type.

Surface and Parts



Tips:

Please do not use the device when it is in charging, it is easy to broke electronic units.



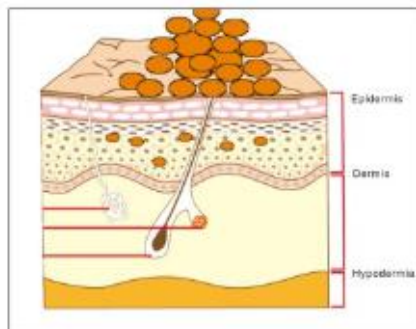
Tips:

When Charging, the indicator is Red light, after full charging, the Red light will auto off. In working status, indicator is Blue light.

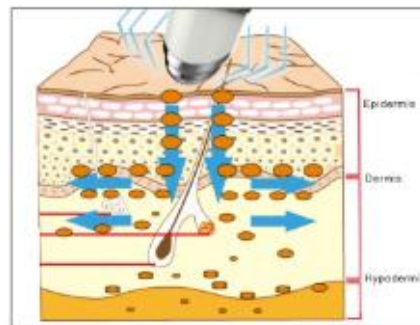
Principles and Functions

1. Vibration lead in massage

By the nearly ten thousand per minutes high frequency vibration massage, pat skin tissues and cells, enhance skin elasticity, recover skin vitality, change tension of pores at the same time, help essence, cream and other skin care products to be lead-in quickly through pores into deep skin, strengthen skin to absorb nutrition. It is the common function in beauty industry. The research shows that vibration lead-in can promote 30% -40% efficiency to absorb nutrition, especially nutrition lead-in of cream. High frequency vibration can break cellulite, strengthen metabolism of adipose layer and thin face.



Inefficient absorption of nutrition by natural way



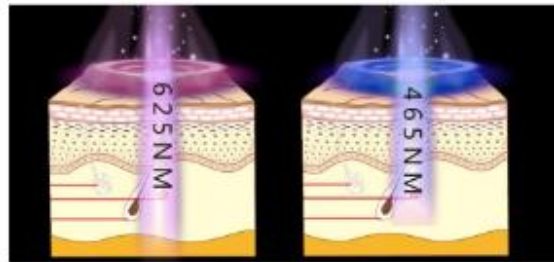
Absorption efficiency doubles by high frequency vibration

2.Red light rejuvenate skin:625nm wavelength.

European advocate phototherapy. All thing of nature acquire energy through light and keep biological balance. Red light is the 625nm red light extracted from seven colors spectrum of sun, and simulated to infinite close to natural red light. Softly shining on skin can help skin cells to absorb light energy and keep skin healthy and rejuvenation.

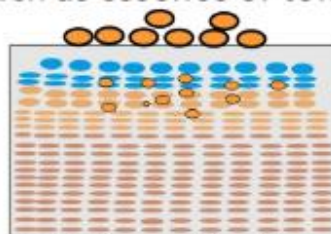
3. Blue light treatment acne and sterilization: 465nm wavelength.

Blue light is the coldest light, can promote synthesis of protein and collagen, activate skin, tighten flabby skin and shrink pores. It is also can effectively eliminate acne bacillus, restrain growth of skin bacteria, suitable for improving erythematic, oily skin, cells status of sensitive skin, sterilization and acne.

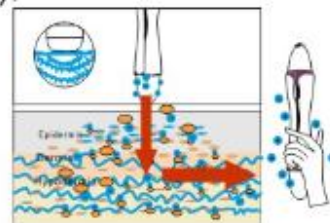


4. Nano ion micro-current lead –in

It is the current which is extensively accepted and used by European, named Galvanic current. Taking advantage of less than 1000um micro current, galvanic current with the help of positive and negative ions, ionized essence applied on skin, absorb tiny nutrition particles on ions. Through the positive and negative loop circulation principle of electric ions, it takes the absorbed nutrition particles and lead them into deep skin, reaching the muscle layer of skin, to make it be fully absorbed. Using for a period of time (usually around 3 months), then permeability of skin can be greatly improved, and skin will be moist and smooth, the research show that Galvanic micro current absorption efficiency of liquid essence can increase 50%-70%, especially suitable for water-soluble nutrition lead in (such as essence or toner liquid).



Nutrition could not be absorbed into deep of skin



Negative ion carry plenty of nutrition particle into deep skin when lowing to positive pole.

5. Heating therapy beauty function (treatment eye black, eye bag and wrinkle fines)

Heating therapy is popular used in beauty , health and medical industry. Medical researches shows ; Heating can quickly active body cells, increased heating energy, stimulate blood circulation, improve body micro circulation , accesses metabolism, quickly relieve fatigue, naturally extract waste toxins.

In Beauty industry, heating can increase blood oxygen content, so that the pores open, blood vessels dilate, and the nutrition of the skin is absorbed quickly, which is the most gentle, comfortable import method. Heating with vibration massage, is very suitable for treatment eye bags, eye black circles, lift around eyes, and removal wrinkle fines.



Before use device

Skin tissue out of position, lack of cellular energy, there is some symptoms such as skin wrinkles, laxity, sagging, dull.



After use device

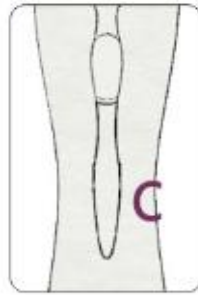
Skin tissue repositioning, cell energy recovery, improve skin wrinkles, laxity, sagging, dull and other symptoms.

User Method, Charging and Maintenance

1. Nutrition lead-in for face (Vibration + Micro-current + Photon)



Put cream or essential oil on face



Keep pressing button C for 2s to start face care procedure



Use face working head A to massage skin for 2-3 minutes

Press Button C for 2 seconds to start device, face head A starts to work and produce high-frequency vibration, blue LED color light I start at the same time and work. The amount of skin care products or essence smear on the face skin, face with a working head A contact with the skin, and massage action, each lasting 2-3 minutes. Right cheek advice to do a clockwise circular movements, left cheek suggest counterclockwise movement, two cheek finish is recommended for 4-6 minutes.

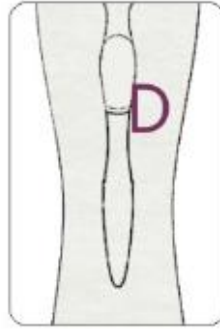
In the use of vibration and color light care into the massage process, may at any time the fingers touch the micro current conductive F, Galvanic micro current conduct-in mode and vibration massage conduct-in mode will work at the same time.

Press the C Key one more time, the face working head A generated stronger vibration and Red ray, same user method as above description.

2. Nutrition lead-in for eyes (Vibration + 40°C +/-2°C heating)



Put cream or essential oil around eyes.



Keep pressing button D for 2s to start eye care procedure



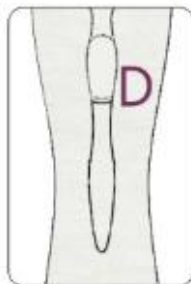
Use eye working head B to massage eyes for 1-2 minutes

The Max temperature is around 40°C +/-2°C after 45 seconds working

Press button D for 2 seconds, eye working had B starts to work and produce week high-frequency vibration (comparing to face vibration). Smear amount of eye cream an eye cream liquid around the eyes. Use eyes working head B contact with the skin , and slowly massage, lasting 1-3 minutes , massage should follow from the bottom up, from iindide to outside sports principle.

3. Removal eyes black circles , eyes bag, wrinkle files (Vibration + 40°C +/-2°C heating + skin lifting)

Basic massage method pictures



Press D for 2s for start work



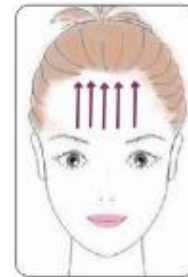
From corner of eyes to the temples, massage it to take care eyes



Take eye working head to press skin with proper force and do lifting operations



Massage from eyes to hair line



Massage from forehead to hair line

According above illustration to lift and massage skin, move the head from in to out, when do the wrinkle removal function, please put the lotion or eye cream on skin, keep the skin moisture, use left hand press the skin around 0.5cm from under the wrinkle lines, use right head to hold the device, make the eye massage head to touch the skin and move it 4-6sconds/time, total massage around 4-5 times per area.

Device charging

You should charge the instrument when the vibration gets weaker clearly for the first time use or using after a while. Please connect the end of USB charging cable to the hole on the instrument with another end to the USB interface to computer or mobile then charge the instrument. Red indicator is for charging. Blue indicator is for fully charge, so you can pull out the charging cable. Instrument circuit has the function of preventing overcharge so it will stop automatically when fully charge.

Safe use

1. Do not use it at the place below 0°C and over 40°C or exposed to sunshine directly.
2. Do not use it near combustibles like benzene, oil paint, spray fire extinguisher ect, or it will cause explosion or fire.
3. Do not put the machine at the very wet place or somewhere have water like bathtub, washbowl ect, otherwise it may cause short circuit or damage.
4. Put the machine away from children and don't let them play with it, it will lead to injury, electric shock or other hurt.
5. Use this instrument correctly and don't use it for baby, it may cause injury or accident.
6. Patients with skin disease and people who is allergic to current or stainless steel can't use this machine. Don't use it on wound.
7. If the machine heating abnormally, please stop to using it.
8. If you feel uncomfortable about skin or body when using it, please stop immediately.
9. Children, the pregnant, hypertensive, cardiopathy patient, other chronic diseases patients and psychopath can't use the machine.
10. Do not tear down or repair the device by consumer.
11. Do not use the device when charging.
12. Do not use the device to eye balls.

Technical parameters and packaging

Input voltage:5V

Power: 1.8W

Capacity of battery:400mAh

Machine material: Imported ABS plastic

Machine size: 165×31×31mm

Net weight : 69g

Gift-box packing: mainframe 1pcs,USB charging cable 1pcs

The actual device color may be different from the product picture shown on gift box, please kindly note.