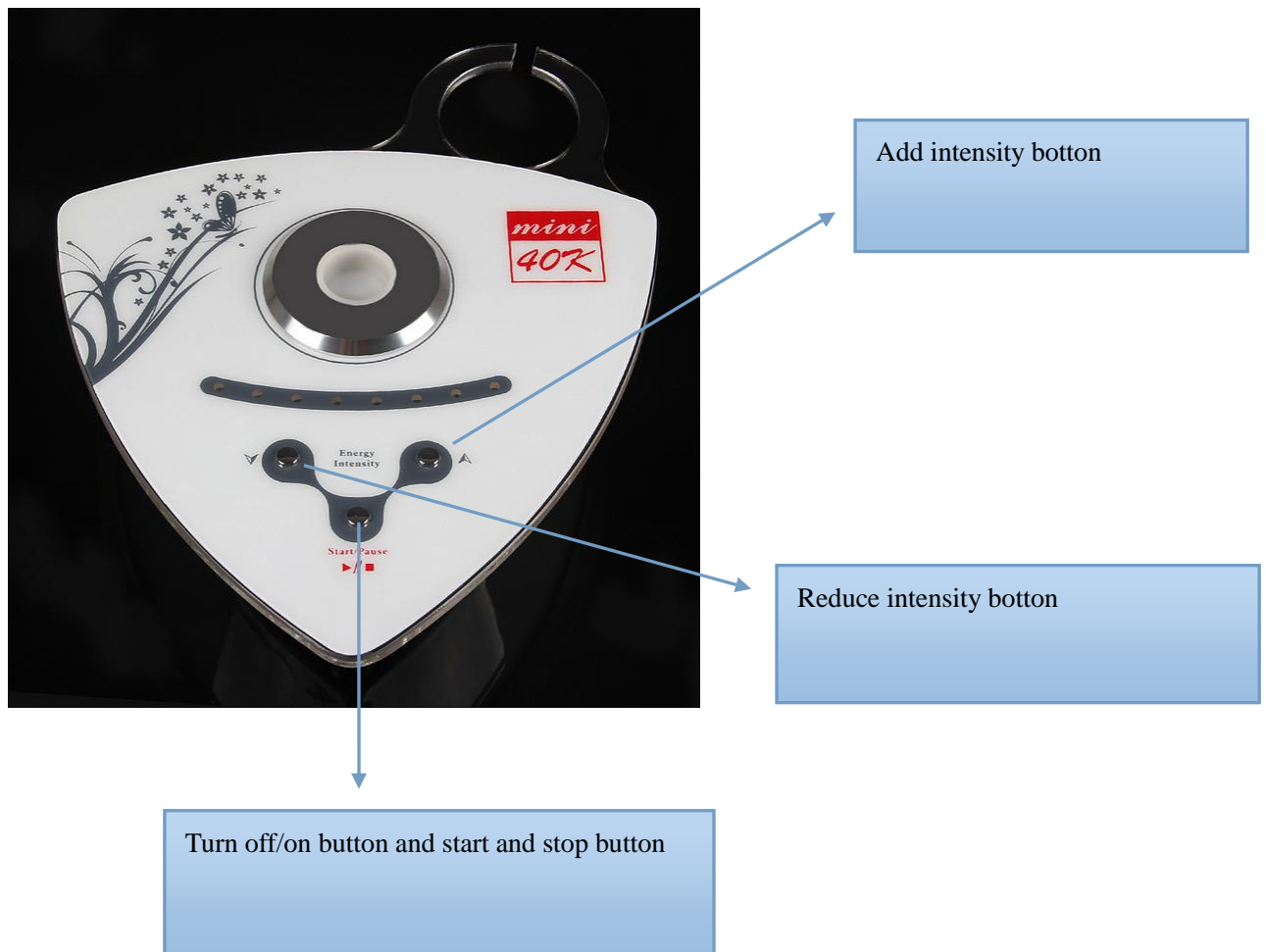


Mini 40K Cavitation Slimming Machine

What is the 40K Cavitation Ultrasound Liposuction Treatment Like?

It uses a 40kHz focused ultrasound cavitation effect, to cause tons of microscopic air bubbles to surround the lipocyte (fat cell) membranes and with its resonant frequency, the bubbles cause a high enough pressure to cause the fat cells to break up instantly. The broken lipocytes are then moved to the liver and safely metabolized out of human body which is assisted by drinking a lot of water. It produces lipolysis of fatty acids from adipocytes (fat-laden cells) due to a phenomenon known as stable cavitation, and increased cell permeability of the adipocytes. You get an increased flow of triglycerides. Furthermore, there is a breakdown of the fibers through mechanical action ("jet stream"). Finally, some content of adipocytes is metabolized by the liver and eliminated in the urine.

Operation



- 1) Clean The area which will be treated;
- 2) Smear a little gel on the treatment area;
- 3) Plug machine, then press the start button;
- 4) According to each body, adjust the intensit;

ILLUSTRATIN of OPERATION

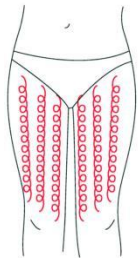
THIGH

Treated time: 30 minutes

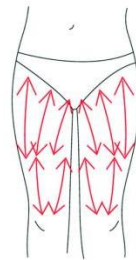
1. From down to upper, pushing to the groin to dredge the lymph.



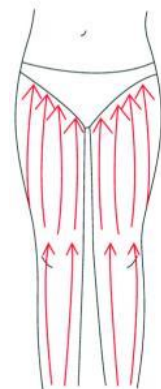
2. From down to upper, circling push by anticlockwise can help decomposing fatness.



3. Also can push by come-and-go to decompose fatness.

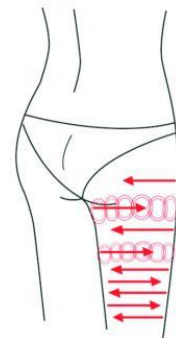


4. Pull from the knee and muscle texture to upper, can improve the curve.



Treated time: 20 to 30 minutes

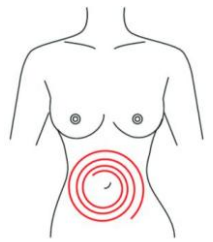
1. From upper to down, by anticlockwise gesture, pull come-and-go.
2. Along the muscle of arm, pull up to lift and tight the muscle.



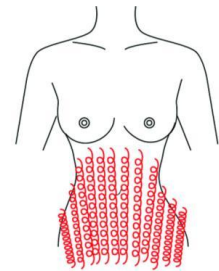
Abdomen

Treated time: 20 to 30 minutes

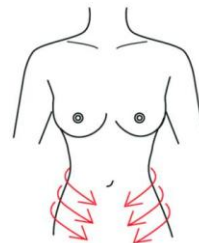
1. From small to large, by clockwise direction, circling around the navel, can help peristalsis of the large intestine.



2. From small to large, by anticlockwise direction, circling push down.



3. From the belly and muscle texture, pull to the groin.



Attention:

1. Pregnant women or women during in menses.
2. Epileptic.
3. Patients with malignancy.
4. Patient whose wound after operation has not healed up.
5. Acute inflammation or epidemical patients.
6. Whom with heart diseases or with heart pacemaker.
7. Who with kidney (gall-stone) disease.
8. Who was embedded metal object or silica gel.
9. Who in menses, birth control period, emiction incontinence period, or accepting the belly operation.
10. Whose body always takes much inner hot.
11. Who has the genetic hypersensitivity.